

Instrument #: 2025-0173
 01/22/2025 11:04:42 AM Total Pages: 1
 ZSC SECTION CORNER CERTIFICATE
 Recording Fee: \$7.00 Transfer Tax: \$0
 Sheri L. Jones, Recorder, Jones County Iowa



PREPARED BY: MICHAEL J. WEBER, WEBER SURVEYING, LLC, 26789 46TH AVE, BERNARD, IA 52032 (563) 879-4173

UNITED STATES PUBLIC LAND SURVEY CORNER CERTIFICATE
 LAND SURVEY MONUMENTS SITUATED IN SECTION 10, TOWNSHIP 84 NORTH, RANGE 1 WEST
 OF THE FIFTH PRINCIPAL MERIDIAN, JONES COUNTY, IOWA.
 PREVIOUSLY RECORDED DOC. NO. 2007 0086

(book, page, document number, etc.)

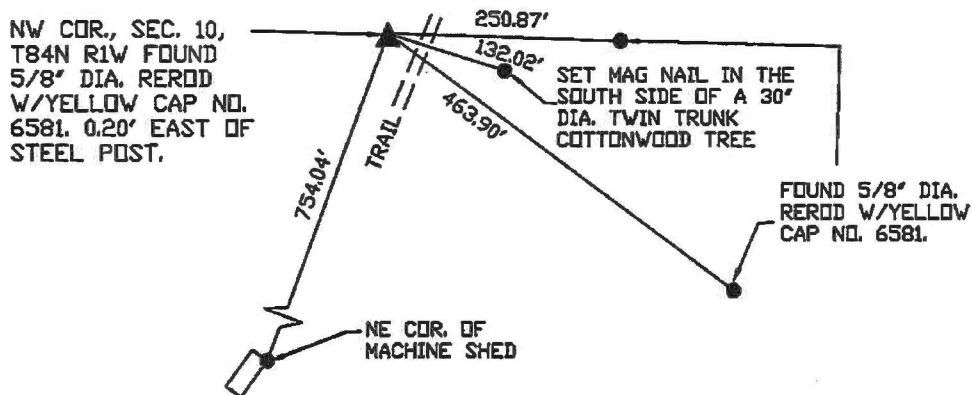
(Show reason for preparing this certificate, the evidence and detailed procedures used in establishing the corner positions and monumentation found or placed.)

Monument Description and Remarks:

-NW COR., SEC. 10, T84N R1W FOUND 5/8" DIA. REROD W/YELLOW CAP NO. 6581. PREVIOUSLY RECORDED IN DOC. NO. 2007 0086 INDEXED AS THE NE COR. SEC. 9, T-84N R1W

(Show a minimum of three reference ties to durable physical objects, relevant monuments and physical conditions that will enable recovery of the corner.)

PLAN - VIEW



DWG. NO. 24147

	I HEREBY CERTIFY THAT THIS LAND SURVEYING DOCUMENT WAS PREPARED AND THE RELATED SURVEY WORK WAS PERFORMED BY ME OR UNDER MY DIRECT PERSONAL SUPERVISION AND THAT I AM A DULY LICENSED LAND SURVEYOR UNDER THE LAWS OF THE STATE OF IOWA. <i>Michael J. Weber</i> January 22, 2025 MICHAEL J. WEBER (DATE) LICENSE NUMBER 15084 MY LICENSE RENEWAL DATE IS DECEMBER 31, 2025	List Corners to be Indexed Corner Sec Twp Range NW COR., 10 84N 1W
	SHEETS COVERED BY THIS SEAL: <u>This sheet</u>	

COPY

FEBOOK: 2007 0086
REC FEES: NO FEE
PAGES: 1 1/9/2007 10:08 AM
Marie Krutzfield, Recorder
Jones County, Iowa

J.D. TJEPKES, LS. JONES COUNTY ENGINEER'S OFFICE, 19501 HWY. 64, ANAMOSA, IOWA, 52205 (319)462-3785

UNITED STATES PUBLIC LAND SURVEY CORNER CERTIFICATE

LAND SURVEY MONUMENTS SITUATED IN SECTION 9, TOWNSHIP 84
NORTH, RANGE 1 WEST OF THE 5TH P.M., JONES COUNTY, IOWA

CORNERS TO BE INDEXED			
CORNER	SECTION	TOWNSHIP	RANGE
E1/4 COR.	9	84N	1W
OFFICE FILE NO. 84109o_010307.tif			

FIELD NOTES:
12-11-2006
BK 2006
P 77

STATE PLANE COORDINATE
NAD 83 IOWA NORTH
N 3509573.798
E 5611453.501

NOTE: THE STATE PLANE COORDINATE AS INDICATED IS FOR CONVENIENCE ONLY. THE TIES AS SHOWN SHOULD BE USED TO REPLACE THE CORNER, IF DESTROYED

PREVIOUSLY RECORDED IN BOOK NA, PAGE NA
MONUMENT DESCRIPTION AND HOW ESTABLISHED _____

PER PLAT OF SURVEY ON FILE AT JONES COUNTY RECORDER'S OFFICE IN BOOK "N" PAGE 119 (DOCUMENT # 1999-3994) AND OLD TIES IN JONES COUNTY ENGINEER'S OFFICE, SET 5/8"x24" REBAR W/CAP #14807 FLUSH WITH PRESENT GROUND. TIES AS INDICATED FOR E1/4 CORNER SECTION 9 T84N R1W.

CORNERS TO BE INDEXED			
CORNER	SECTION	TOWNSHIP	RANGE
NE COR.	9	84N	1W
OFFICE FILE NO. 84109e_010307.tif			

FIELD NOTES:
12-11-2006
BK 2006
P 77

STATE PLANE COORDINATE
NAD 83 IOWA NORTH
N 3512212.044
E 5611370.855

NOTE: THE STATE PLANE COORDINATE AS INDICATED IS FOR CONVENIENCE ONLY. THE TIES AS SHOWN SHOULD BE USED TO REPLACE THE CORNER, IF DESTROYED

PREVIOUSLY RECORDED IN BOOK NA, PAGE NA
MONUMENT DESCRIPTION AND HOW ESTABLISHED _____

PER PLAT OF SURVEY ON FILE AT JONES COUNTY RECORDER'S OFFICE IN BOOK "N" PAGE 119 (DOCUMENT # 1999-3994), FOUND PIN & CAP #6581, FLUSH WITH PRESENT GROUND. TIES AS INDICATED FOR NE CORNER SECTION 9 T84N R1W.

CORNERS TO BE INDEXED			
CORNER	SECTION	TOWNSHIP	RANGE
OFFICE FILE NO. _____			

PREVIOUSLY RECORDED IN BOOK _____, PAGE _____
MONUMENT DESCRIPTION AND HOW ESTABLISHED _____

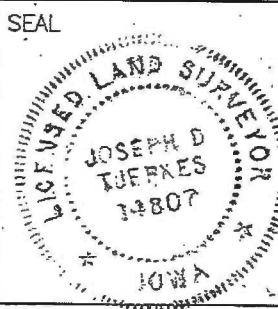
CORNERS TO BE INDEXED			
CORNER	SECTION	TOWNSHIP	RANGE
OFFICE FILE NO. _____			

PREVIOUSLY RECORDED IN BOOK _____, PAGE _____
MONUMENT DESCRIPTION AND HOW ESTABLISHED _____

I hereby declare that this plat, survey or report was made by me or under my direct personal supervision and that I am a duly registered Land Surveyor under the laws of the State of Iowa.

Signed: 1-9-07

Joseph D. Tjepkes L.S. Iowa Reg. No. 14807
My Registration Renewal Date is December 31, 2008



J.D. TJEPKES LS 14807
JONES COUNTY
ENGINEER'S OFFICE
19501 HWY. 64,
ANAMOSA, IOWA,
52205 (319)462-3785

THIS IS NOT A CERTIFICATION

JONES COUNTY ENGINEER'S OFFICE, 19501 HWY. 64, ANAMOSA, IOWA, 52205 (319)462-3785

UNITED STATES PUBLIC LAND SURVEY CORNER CERTIFICATE

LAND SURVEY MONUMENTS SITUATED IN SECTION 9, TOWNSHIP 84
NORTH, RANGE 1 WEST OF THE 5TH P.M., JONES COUNTY, IOWA

CORNERS TO BE INDEXED

CORNER NORTHEAST	SECTION 9	TOWNSHIP 84N	RANGE 1W
---------------------	--------------	-----------------	-------------

OFFICE FILE NO. _____
84109e_011204.jpg

COUNTY SURVEY CREW
DATE NOT ON CARD.

COR. STONE BOOK
B-19, PG-40

PREVIOUSLY RECORDED IN BOOK _____, PAGE _____
MONUMENT DESCRIPTION AND HOW ESTABLISHED FOUND
STONE 2.5' BELOW SURFACE. SET STANDARD CONCRETE MONUMENT
OVER STONE. CORNER SET IN OPEN PASTURE. NO TIES ON CARD.
NORTHEAST CORNER OF SECTION 9, TOWNSHIP 84 NORTH, RANGE 1
WEST OF THE 5TH PRINCIPAL MERIDIAN, JONES COUNTY, IOWA.

CORNERS TO BE INDEXED

CORNER N-QUARTER	SECTION 9	TOWNSHIP 84N	RANGE 1W
---------------------	--------------	-----------------	-------------

OFFICE FILE NO. _____
84109c_011204.jpg

COUNTY SURVEY CREW
05-01-1944

COR. STONE BOOK
B-19, PG-40

PREVIOUSLY RECORDED IN BOOK _____, PAGE _____
MONUMENT DESCRIPTION AND HOW ESTABLISHED _____
FOUND LIMESTONE, MAY 1, 1944, 1' NORTH AND 1' EAST OF FENCE
CORNER, NORTH QUARTER CORNER OF SECTION 9, TOWNSHIP 84
NORTH, RANGE 1 WEST OF THE 5TH PRINCIPAL MERIDIAN, JONES
COUNTY, IOWA. TIES AS INDICATED.

CORNERS TO BE INDEXED

CORNER E-QUARTER	SECTION 9	TOWNSHIP 84N	RANGE 1W
---------------------	--------------	-----------------	-------------

OFFICE FILE NO. _____
84109o_011204.jpg

COR. STONE BOOK
B-19, PG-41

COUNTY SURVEY CREW:

PREVIOUSLY RECORDED IN BOOK _____, PAGE _____
MONUMENT DESCRIPTION AND HOW ESTABLISHED _____
FOUND STONE NORTH SIDE OF FENCE POST. FENCE SOUTH & WEST.
EAST QUARTER CORNER OF SECTION 9, TOWNSHIP 84 NORTH, RANGE
1 WEST OF THE 5TH PRINCIPAL MERIDIAN, JONES COUNTY, IOWA.

CORNERS TO BE INDEXED

CORNER	SECTION	TOWNSHIP	RANGE
--------	---------	----------	-------

OFFICE FILE NO. _____

PREVIOUSLY RECORDED IN BOOK _____, PAGE _____
MONUMENT DESCRIPTION AND HOW ESTABLISHED _____

~~I hereby declare that this plat, survey or report was made by me or under my direct personal supervision and that I am a duly registered Land Surveyor under the laws of the State of Iowa.~~

Signed: _____

SEAL

JONES COUNTY
ENGINEER'S OFFICE

19501 HWY. 64,
ANAMOSA, IOWA,
52205 (319)462-3785