

Instrument #: 2024-2979
 12/18/2024 03:59:16 PM Total Pages: 1
 ZSC SECTION CORNER CERTIFICATE
 Recording Fee: \$7.00 Transfer Tax: \$0
 Sheri L. Jones, Recorder, Jones County Iowa



PREPARED BY: MICHAEL J. WEBER, WEBER SURVEYING, LLC, 26789 46TH AVE, BERNARD, IA 52032 (563) 879-4173

UNITED STATES PUBLIC LAND SURVEY CORNER CERTIFICATE OF
 LAND SURVEY MONUMENTS SITUATED IN SECTION 4, TOWNSHIP 84 NORTH, RANGE 1 WEST
 OF THE FIFTH PRINCIPAL MERIDIAN, JONES COUNTY, IOWA.
 PREVIOUSLY RECORDED SEE NOTES BELOW

(Book, page, document number, etc)

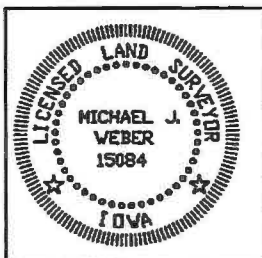
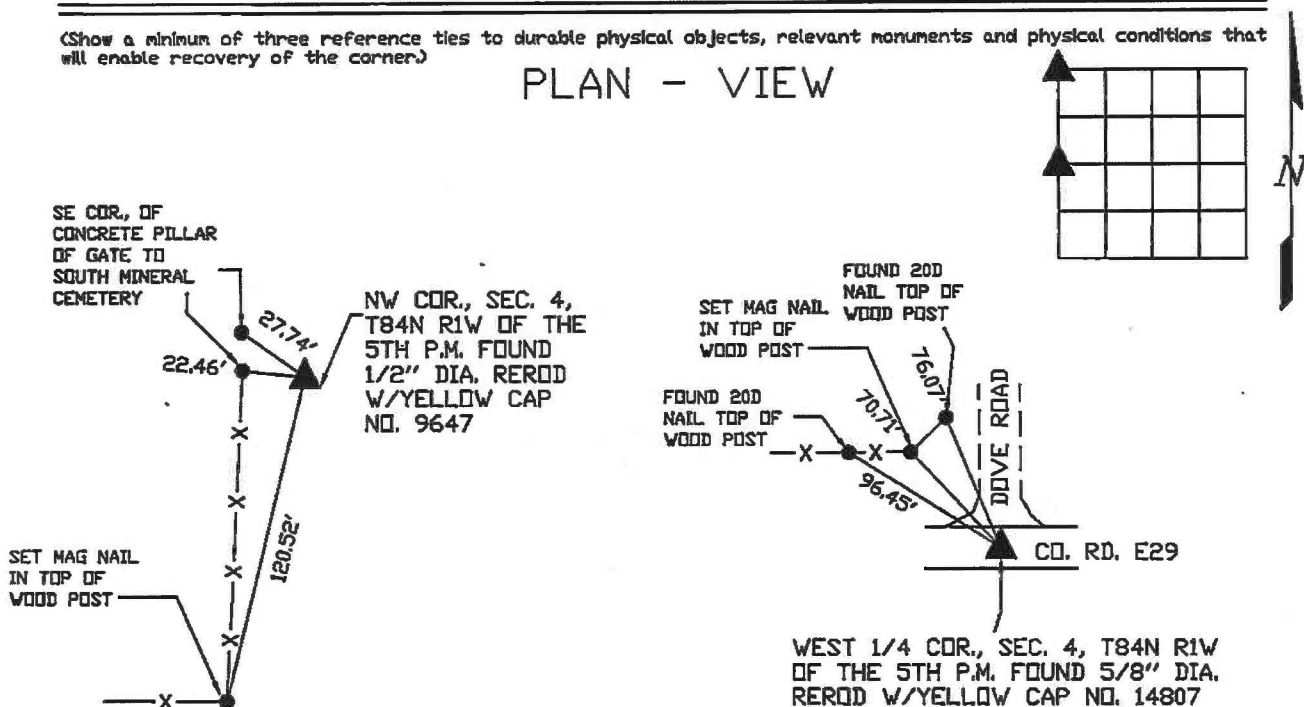
(Show reason for preparing this certificate, the evidence and detailed procedures used in establishing the corner positions and monumentation found or placed.)

Monument Description and Remarks:

- NW COR., SEC. 4, T84N R1W OF THE 5TH P.M. FOUND 1/2" DIA. REROD W/YELLOW CAP NO. 9647 PREVIOUSLY RECORDED SEC. COR. CERT. INSTR. NO. 2004 3320. ESTABLISHED NEW TIES
- WEST 1/4 COR., SEC. 4, T84N R1W OF THE 5TH P.M. FOUND 5/8" DIA. REROD W/YELLOW CAP NO. 14807 PREVIOUSLY RECORDED SEC. COR. CERT. INSTR. NO. 2004 3178. ESTABLISHED NEW TIES

(Show a minimum of three reference ties to durable physical objects, relevant monuments and physical conditions that will enable recovery of the corner.)

PLAN - VIEW



I HEREBY CERTIFY THAT THIS LAND SURVEYING DOCUMENT WAS PREPARED AND THE RELATED SURVEY WORK WAS PERFORMED BY ME OR UNDER MY DIRECT PERSONAL SUPERVISION AND THAT I AM A DULY LICENSED LAND SURVEYOR UNDER THE LAWS OF THE STATE OF IOWA.
Michael J. Weber December 18, 2024
 MICHAEL J. WEBER (DATE)
 LICENSE NUMBER 15084
 MY LICENSE RENEWAL DATE IS DECEMBER 31, 2025
 SHEETS COVERED BY THIS SEAL: This Sheet

List Corners to be Indexed	
Corner	Sec Twp Range
NW COR.,	4-84N-1W
WEST 1/4 COR.,	4-84N-1W
	DWG. 24015

2004 3320

FILED
RECORDERS OFFICE
JONES COUNTY IOWA

04 SEP -2 AM 11:21

MARIE KRUTZFIELD
RECORDER 7.00 pd

PREPARED BY
STEPHEN MICHAEL BRAIN, BRAIN ENGINEERING, INC., 1540 MIDLAND COURT NE, CEDAR RAPIDS, IOWA PH. (319) 294-9424

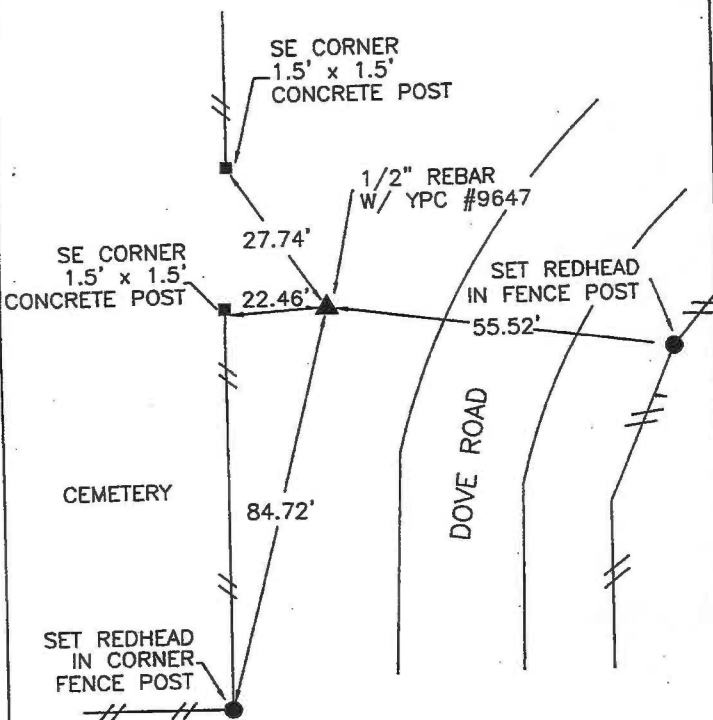
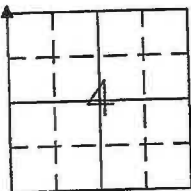
UNITED STATES PUBLIC LAND SURVEY CORNER CERTIFICATE

LAND SURVEY MONUMENTS SITUATED IN SECTION 4, TOWNSHIP 84 NORTH
RANGE 1 WEST OF THE 5TH P.M., _____ JONES COUNTY, IOWA.

NO SCALE



NW CORNER



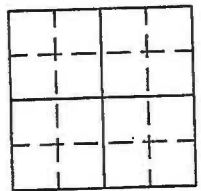
YPC- YELLOW PLASTIC CAP

PREVIOUSLY RECORDED IN BOOK _____ PAGE _____

MONUMENT DESCRIPTION AND HOW ESTABLISHED _____

SET 1/2" REBAR WITH YPC #9647

NO SCALE



1581
84105e-290104.JLG

PREVIOUSLY RECORDED IN BOOK _____ PAGE _____

MONUMENT DESCRIPTION AND HOW ESTABLISHED _____



I hereby certify that this land surveying document and the related survey work was performed by me or under my direct personal supervision and that I am a duly licensed Land Surveyor under the laws of the State of Iowa.

Signed *[Signature]* Date 9/1/04
Stephen Michael Brain, L.S.
My License Renewal Date is December 31, 2004
License Number 9647
Pages or sheets covered by this seal: 1/1

- A. THERE IS NO CERTIFICATE FOR THE CORNER ON FILE WITH THE RECORDER OF THE COUNTY IN WHICH THE CORNER IS LOCATED
- B. THE SURVEYOR IN RESPONSIBLE CHARGE OF THE LAND SURVEYING ACCEPTS A CORNER POSITION WHICH DIFFERS FROM THAT SHOWN IN THE PUBLIC RECORDS OF THE COUNTY IN WHICH THE CORNER IS LOCATED.
- C. THE CORNER MONUMENT IS REPLACED OR MODIFIED IN ANY WAY.
- D. THE REFERENCE TIES REFERRED TO IN AN EXISTING PUBLIC RECORD ARE NOT CORRECT.

CORNERS TO BE INDEXED

CORNER	SECTION	TOWNSHIP	RANGE
NW CORNER	4	T84N	R1W

BRAIN ENGINEERING, INC.

1540 MIDLAND COURT NE
CEDAR RAPIDS, IOWA 52402 32474-10
(319) 294-9424

E

cju 8/31/04