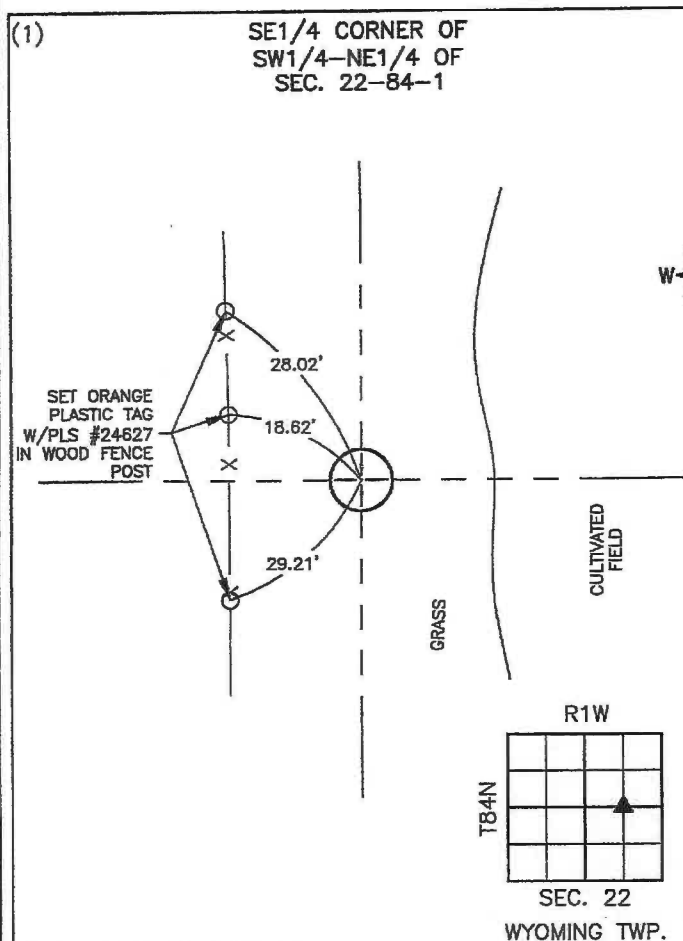


Number: 2024-2724
 Recorded: 11/21/2024 at 3:15:53.0 PM
 County Recording Fee: \$7.00
 Iowa E-Filing Fee: \$3.13
 Combined Fee: \$10.13
 Revenue Tax:
 Sheri L. Jones RECORDER
 Jones County, Iowa

PREPARED BY: ADAM RECKER, FEHR GRAHAM, 221 EAST MAIN ST., SUITE 301 MANCHESTER, IA 52057 -- PH: 563.927.2060

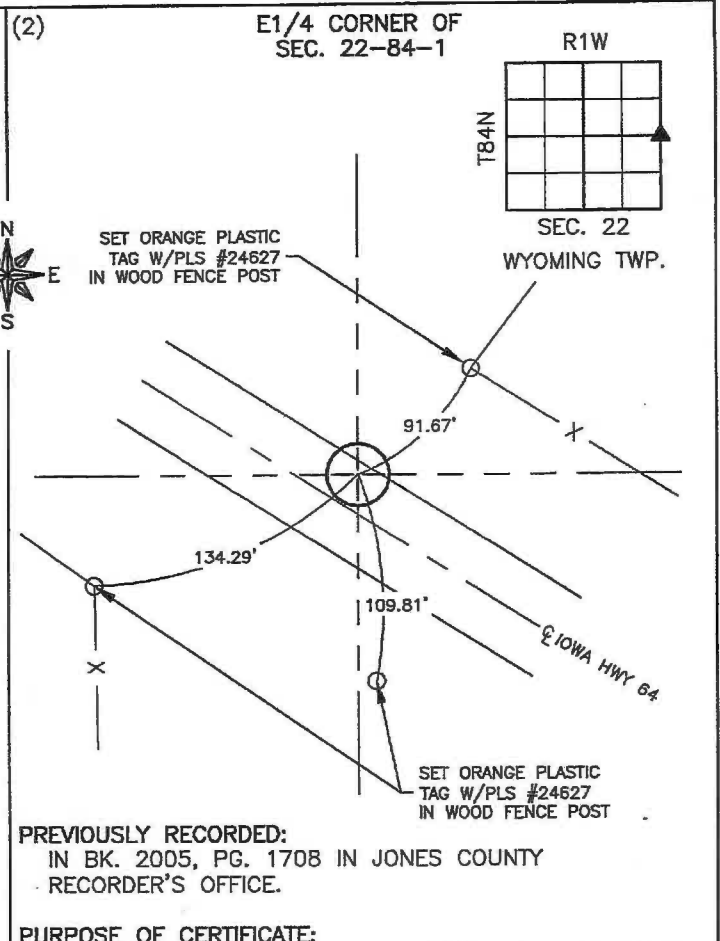
UNITED STATES PUBLIC LAND SURVEY CORNER CERTIFICATE
JONES COUNTY, IOWA
SECTION 22-T84N-R1W



PREVIOUSLY RECORDED:
 NO PREVIOUS CERTIFICATE ON FILE.

PURPOSE OF CERTIFICATE:
 SET MONUMENT AT MIDPOINT AND ONLINE BETWEEN CENTER OF SECTION AND E1/4 CORNER.

MONUMENT DESCRIPTION AND ESTABLISHMENT:
 SET 1/2" REBAR W/2"Ø ALUMINUM CAP #24627 BURIED 4" DEEP



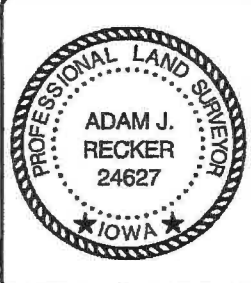
PREVIOUSLY RECORDED:
 IN BK. 2005, PG. 1708 IN JONES COUNTY RECORDER'S OFFICE.

PURPOSE OF CERTIFICATE:
 THE SECTION CORNER TIES AND MONUMENT ARE GONE FROM PREVIOUS CERTIFICATE. USED DISTANCES AND DIMENSIONS FROM PLATS WITH RECORDING INSTRUMENT #2005-1734 AND #2005-3848 TO HELP RE-ESTABLISH LOCATION OF MONUMENT.

MONUMENT DESCRIPTION AND ESTABLISHMENT:
 SET MAG NAIL W/SSW #24627

CORNERS TO BE INDEXED

CORNER	SECTION	TOWNSHIP	RANGE
(1) SE1/4 of SW1/4-NE1/4	22	84N	1W
(2) E1/4	22	84N	1W



I hereby certify that this land surveying document was prepared and the related survey work was performed by me or under my direct personal supervision and that I am a duly licensed Land Surveyor under the laws of the State of Iowa.

Adam J. Recker 11-21-2024
 Adam J. Recker, P.L.S. Date
 License Number: 24627
 My license renewal date is December 31, 2025.
 Sheets covered by this seal: THIS SHEET ONLY

FEHR GRAHAM ILLINOIS
 ENGINEERING & ENVIRONMENTAL IOWA
 © 2024 FEHR GRAHAM WISCONSIN

A:\C3D\24\24-1545\24-1545 SV-IA-SCC_N&O.dwg

JOB NUMBER: 24-1545

SHEET NUMBER: 1 of 1

2005 1708

FILED
RECORDERS OFFICE
JONES COUNTY IOWA

05 MAY 19 PM 12:16

MARIE KRUTZFIELD
RECORDER 7.00 PD

PREPARED BY
STEPHEN MICHAEL BRAIN, BRAIN ENGINEERING, INC., 1540 MIDLAND COURT NE, CEDAR RAPIDS, IOWA PH. (319) 294-9424

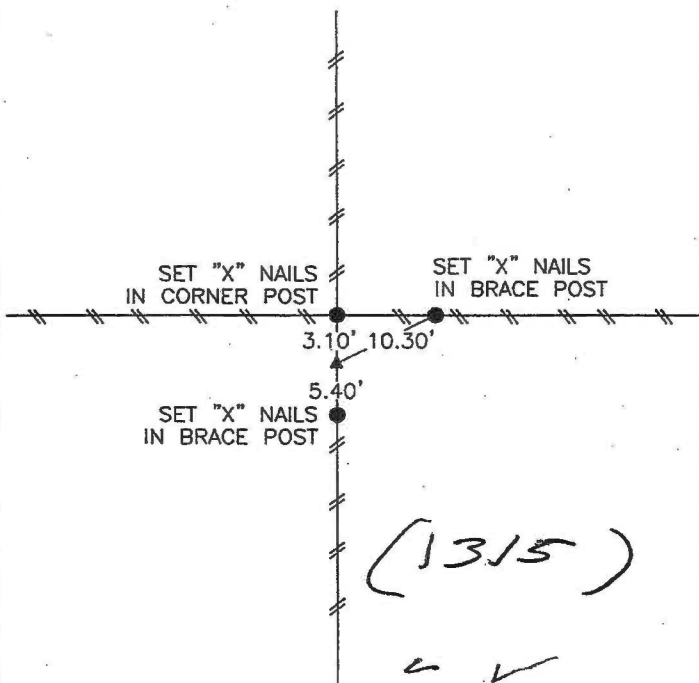
UNITED STATES PUBLIC LAND SURVEY CORNER CERTIFICATE

LAND SURVEY MONUMENTS SITUATED IN SECTION 22, TOWNSHIP 84 NORTH
RANGE 1 WEST OF THE 5TH P.M.; JONES COUNTY, IOWA.

NO SCALE



CENTER



PREVIOUSLY RECORDED IN BOOK _____ PAGE _____

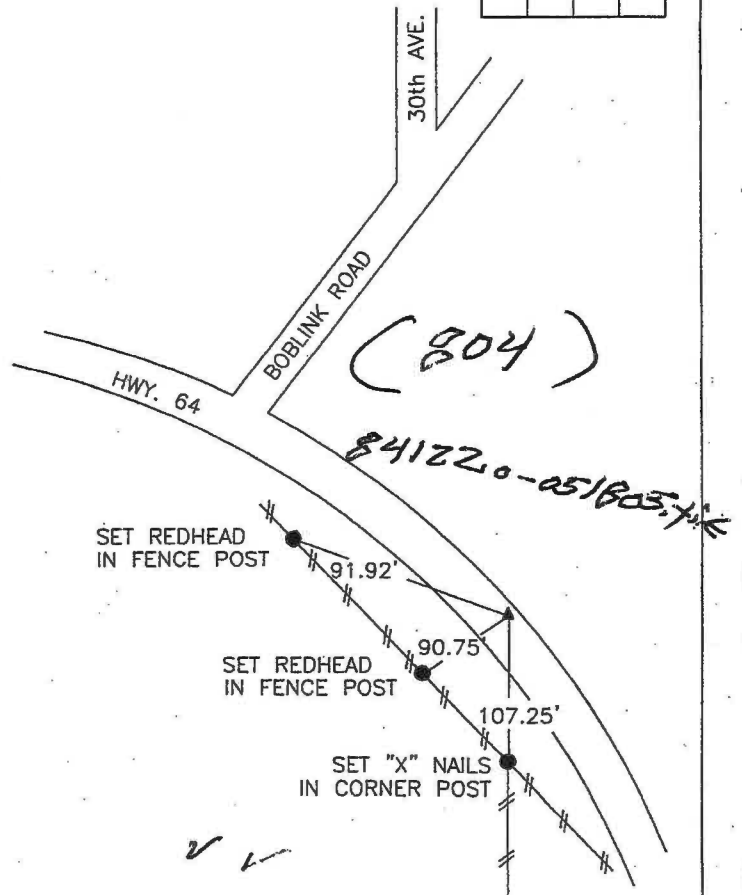
MONUMENT DESCRIPTION AND HOW ESTABLISHED _____

FOUND IDOT ALUMINUM MONUMENT WITH MAGNET INSERTS

NO SCALE



E 1/4 CORNER



PREVIOUSLY RECORDED IN BOOK _____ PAGE _____

MONUMENT DESCRIPTION AND HOW ESTABLISHED _____

FOUND 1/2" REBAR, FLUSH IN PAVEMENT



I hereby certify that this land surveying document and the related survey work was performed by me or under my direct personal supervision and that I am a duly licensed Land Surveyor under the laws of the State of Iowa.

Signed *Stephen Michael Brain* Date 5/18/05
Stephen Michael Brain, L.S.
My License Renewal Date is December 31, 2006
License Number 9647
Pages or sheets covered by this seal: 1/1

- A. THERE IS NO CERTIFICATE FOR THE CORNER ON FILE WITH THE RECORDER OF THE COUNTY IN WHICH THE CORNER IS LOCATED
- B. THE SURVEYOR IN RESPONSIBLE CHARGE OF THE LAND SURVEYING ACCEPTS A CORNER POSITION WHICH DIFFERS FROM THAT SHOWN IN THE PUBLIC RECORDS OF THE COUNTY IN WHICH THE CORNER IS LOCATED.
- C. THE CORNER MONUMENT IS REPLACED OR MODIFIED IN ANY WAY.
- D. THE REFERENCE TIES REFERRED TO IN AN EXISTING PUBLIC RECORD ARE NOT CORRECT.

CORNERS TO BE INDEXED

CORNER	SECTION	TOWNSHIP	RANGE
CENTER	22	T84N	R1 W
E 1/4 CORNER	22	T84N	R1 W

BRAIN ENGINEERING, INC.

1540 MIDLAND COURT NE
CEDAR RAPIDS, IOWA 52402
(319) 294-9424

336805-10 H

UNITED STATES PUBLIC LAND SURVEY CORNER CERTIFICATE OF

LAND SURVEY MONUMENTS SITUATED IN SECTION 23, TOWNSHIP 84 NORTH, RANGE 1 WEST, OF THE 5TH PRINCIPAL MERIDIAN JONES COUNTY IOWA. PREVIOUSLY RECORDED IN DOES NOT APPLY IN COUNTY RECORDER'S OFFICE.

(book, page, document number, etc.)

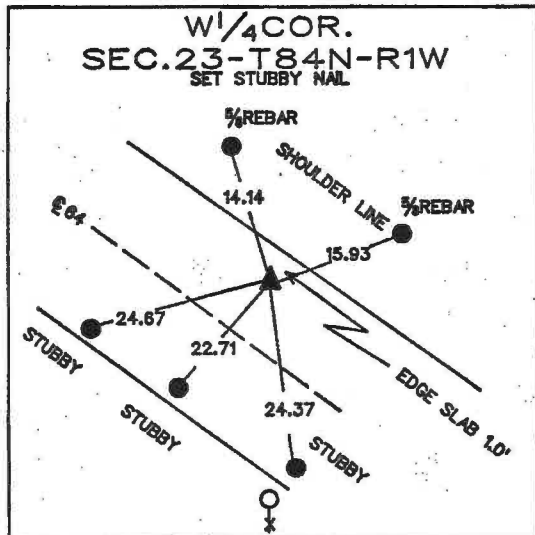
(Show reason for preparing this certificate, the evidence and detailed procedures used in establishing the corner positions and monumentation found or placed.)

MONUMENT DESCRIPTION AND REMARKS: REFERENCED AFTER ASPHALT PROJ.

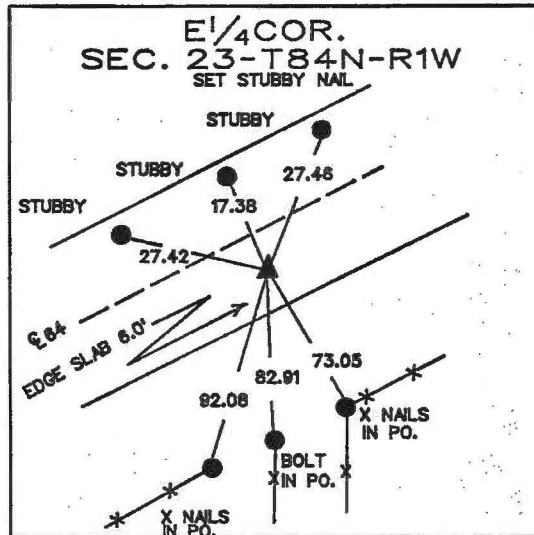
SET BY MANCHESTER CONST.

PLAN - VIEW

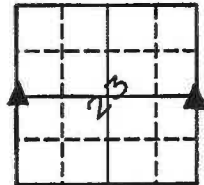
(Show a minimum of three reference ties to durable physical objects, relevant monuments and physical conditions that will enable recovery of the corner.)



2-24-93 ON CARD E. COR SEC 22 M.S.



3-24-93 ON CARD M.S.



I hereby certify that the survey work was completed and this certificate was prepared by me or under my direct personal supervision and that I am a duly registered land surveyor under the laws of the state of Iowa. My registration expires December 31, 1977.

Signature: _____

DENNIS R. KUNZE

Date: 2-5-1993 Reg. No. 10679



LAND CORNERS TO BE RECORDED

Corners	Section	Twp.	Range
E1/4	23	T84N	R1W
W1/4	23	T84N	R1W