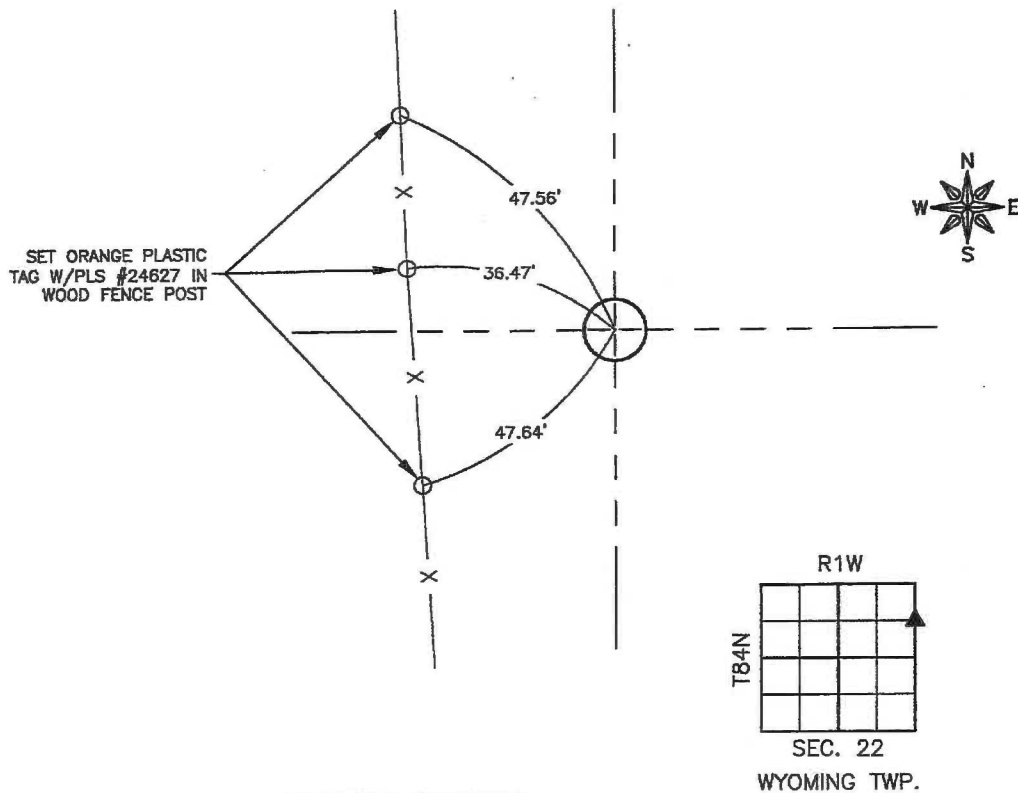


Number: 2024-2725
 Recorded: 11/21/2024 at 3:17:15.0 PM
 County Recording Fee: \$7.00
 Iowa E-Filing Fee: \$3.13
 Combined Fee: \$10.13
 Revenue Tax:
 Sheri L. Jones RECORDER
 Jones County, Iowa

PREPARED BY: ADAM RECKER, FEHR GRAHAM, 221 EAST MAIN ST., SUITE 301 MANCHESTER, IA 52057 - PH: 563.927.2060

UNITED STATES PUBLIC LAND SURVEY CORNER CERTIFICATE
JONES COUNTY, IOWA
SECTION 22-T84N-R1W

SE1/4 CORNER OF
 NE1/4-NE1/4 OF
 SEC. 22-84-1



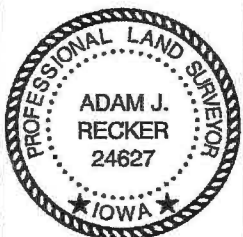
PREVIOUSLY RECORDED:
 NO PREVIOUS CERTIFICATE ON FILE.

PURPOSE OF CERTIFICATE:
 SET MONUMENT AT MIDPOINT AND ONLINE BETWEEN NE
 CORNER AND E1/4 CORNER.

MONUMENT DESCRIPTION AND ESTABLISHMENT:
 SET 1/2" REBAR W/2"Ø ALUMINUM CAP #24627
 BURIED 4" DEEP

CORNERS TO BE INDEXED

CORNER	SECTION	TOWNSHIP	RANGE
SE1/4 of NE1/4-NE1/4	22	84N	1W



I hereby certify that this land surveying document was prepared and the related survey work was performed by me or under my direct personal supervision and that I am a duly licensed Land Surveyor under the laws of the State of Iowa.

Adam J. Recker 11-21-2024
 Adam J. Recker, P.L.S. Date
 License Number: 24627
 My license renewal date is December 31, 2025.
 Sheets covered by this seal: THIS SHEET ONLY

FEHR GRAHAM
 ENGINEERING & ENVIRONMENTAL
 © 2024 FEHR GRAHAM

ILLINOIS
 IOWA
 WISCONSIN

A:\C3D\24\24-1545\24-1545 SV-IA-SCC_J.dwg

JOB NUMBER:
 24-1545

SHEET NUMBER:
 1 of 1