

Number: 2025-0793
Recorded: 4/7/2025 at 3:13:15.0 PM
County Recording Fee: \$7.00
Iowa E-Filing Fee: \$3.00
Combined Fee: \$10.00
Revenue Tax:
Sheri L. Jones RECORDER
Jones County, Iowa

RETURN TO & PREPARED BY: AXIOM CONSULTANTS, LLC, 300 S. CLINTON STREET UNIT 200, IOWA CITY, IA 52240 - PH# 319.519.6220

UNITED STATES PUBLIC LAND
SURVEY CORNER CERTIFICATE

LAND SURVEY MONUMENTS SITUATED IN SECTION 36, TOWNSHIP 86 NORTH,
RANGE 3 WEST OF THE 5TH P.M., JONES COUNTY, IOWA.

REASON FOR PREPARING CERTIFICATE:

- ☐ A. NO CERTIFICATE OF RECORD FOUND.
☐ B. MONUMENT OR TIES FOUND DIFFER FROM RECORD.
☒ C. MONUMENT OR TIES REPLACED.



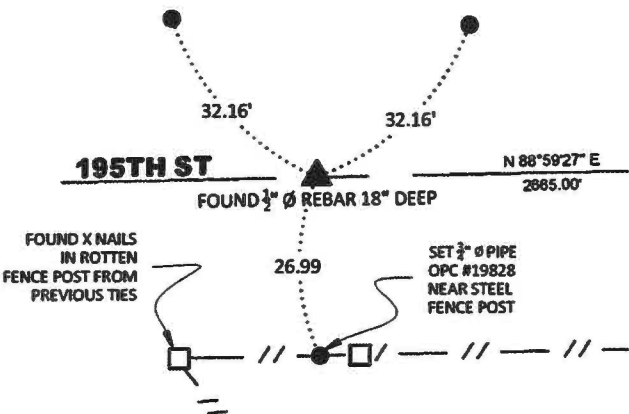
NOT TO SCALE

LEGEND



SECTION CORNER-AS LABELED
TIE-AS LABELED
RIGHT OF WAY
CENTERLINE
EXISTING FENCE

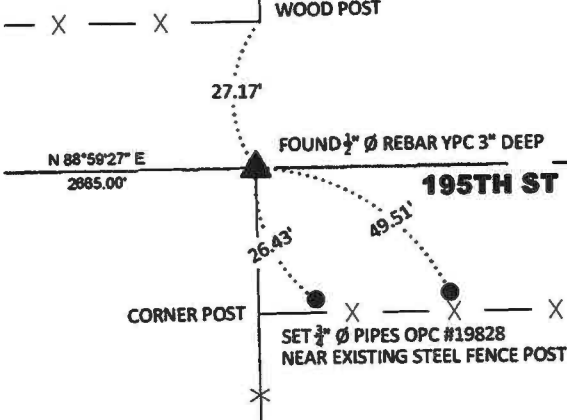
WEST CORNER
SEC. 36-86-3



MONUMENT DESCRIPTION AND REMARKS:

CORNER CERTIFICATE 1999 1215 CALLED FOR 1/2" Ø PIN - 18" DEEP. FOUND 1/2" Ø REBAR WITH NO CAP - 18" DEEP IN CENTERLINE OF 195TH STREET. PREVIOUS TIES CALLED FOR IN THE SOUTH FENCE WERE DILAPIDATED AND THE NORTH FENCE HAS BEEN REMOVED. SET 3/4" Ø PIPES OPC #19828 FOR NEW TIES AS SHOWN.

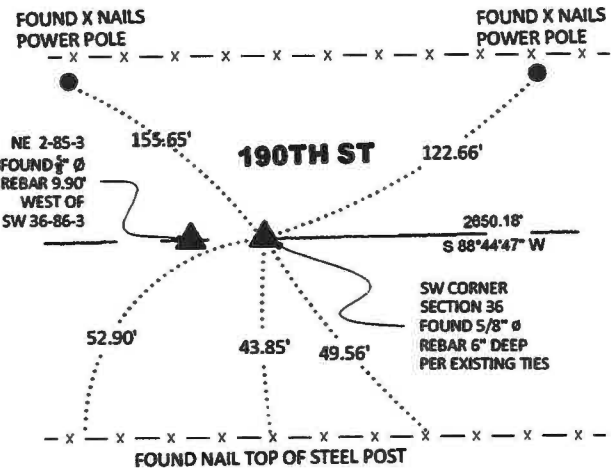
CENTER CORNER
SEC. 36-86-3



MONUMENT DESCRIPTION AND REMARKS:

CORNER CERTIFICATE 2001 1936 CALLED FOR 1/2" Ø REBAR WITH YELLOW PLASTIC CAP #12462. FOUND 1/2" Ø REBAR WITH UNREADABLE YELLOW PLASTIC CAP. PREVIOUS TIES CALLED FOR CORNER POST TO THE SOUTH AND NORTH. BOTH POST EXIST BUT NOT IN THE BEST CONDITION. SET 3/4" Ø PIPES OPC #19828 FOR NEW TIES AS SHOWN.

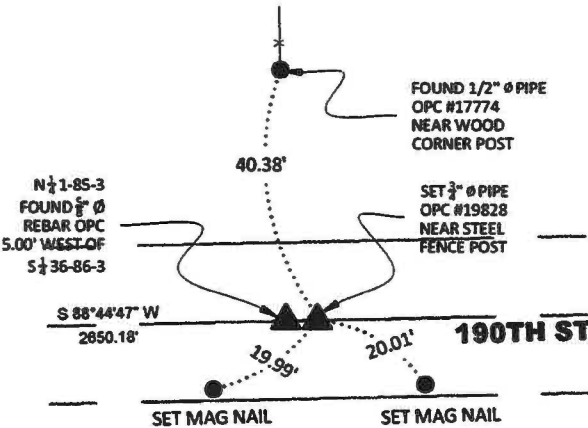
SOUTHWEST CORNER
SEC. 36-86-3



MONUMENT DESCRIPTION AND REMARKS:

NO PREVIOUS TIES ON FILE FOR SW CORNER OF SECTION 36. EXISTING TIES FOUND PER TIES 1999 1215 FOR SE CORNER OF SECTION 35.

SOUTH CORNER
SEC. 36-86-3



MONUMENT DESCRIPTION AND REMARKS:

CORNER CERTIFICATE 2005 4301 CALLED FOR 5/8" Ø REBAR WITH ORANGE PLASTIC CAP #14807 FLUSH WITH NEW ASPHALT. FOUND 5/8" Ø REBAR WITH UNREADABLE ORANGE PLASTIC CAP FLUSH WITH ASPHALT. PREVIOUS TIES CALLED FOR IN THE SOUTH FENCE WHICH HAS BEEN REMOVED. SET MAG NAILS AS SHOWN FOR NEW TIES.

CORNERS TO BE INDEXED

CORNERS	SEC.	TWP.	RANGE
WEST	36	86N	03W
CENTER	36	86N	03W
SW	36	86N	03W
SOUTH	36	86N	03W

2005 4302

FILED
RECORDERS OFFICE
JONES COUNTY IOWA

05 NOV 29 AM 9:57

MARIE KRUTZFIELD
RECORDER NO FEE

*LOVELL
WASHNE*

J.D. TJEPKES, LS. JONES COUNTY ENGINEER'S OFFICE, 19501 HWY. 64, ANAMOSA, IOWA, 52205 (319)462-3785

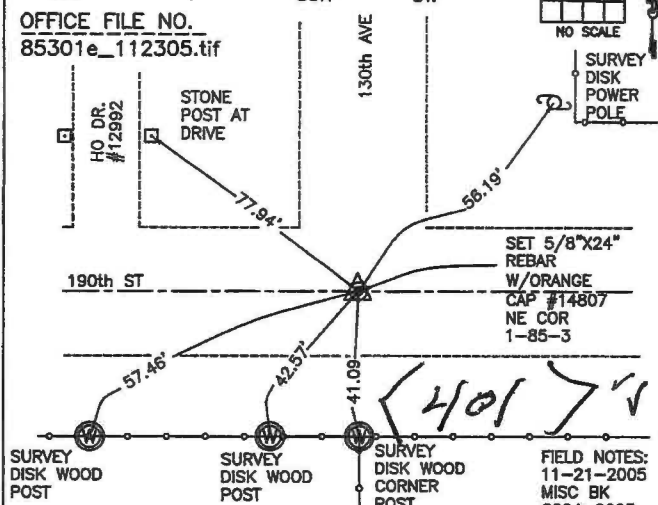
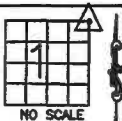
UNITED STATES PUBLIC LAND SURVEY CORNER CERTIFICATE

LAND SURVEY MONUMENTS SITUATED IN SECTION 1, TOWNSHIP 85
NORTH, RANGE 3 WEST OF THE 5TH P.M., JONES COUNTY, IOWA

CORNERS TO BE INDEXED

CORNER SECTION TOWNSHIP RANGE

NE 1 85N 3W
OFFICE FILE NO.
85301e_112305.tif



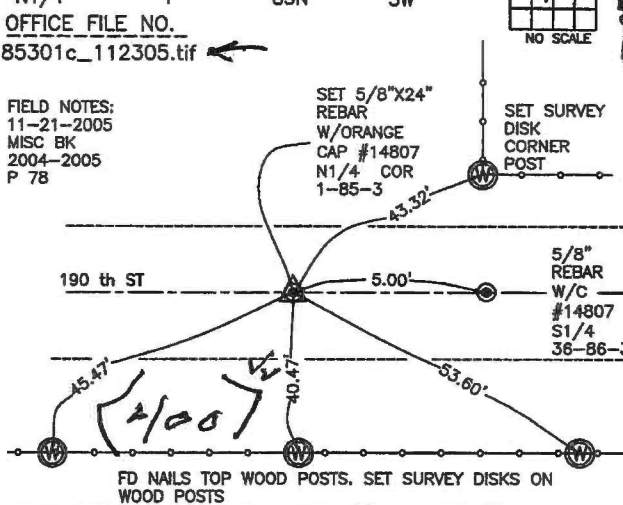
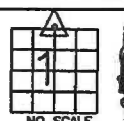
FIELD NOTES:
11-21-2005
MISC BK
2004-2005
P 78

PREVIOUSLY RECORDED IN BOOK NA, PAGE NA P 77
MONUMENT DESCRIPTION AND HOW ESTABLISHED
PER RECORD TIES FOUND 5/8" REBAR BURIED 3". SET 5/8"x24"
REBAR W/ORANGE CAP #14807 FLUSH WITH TOP OF NEW
ASPHALT. TIES AS INDICATED FOR NE CORNER SECTION 1 T85N
R3W.

CORNERS TO BE INDEXED

CORNER SECTION TOWNSHIP RANGE

N1/4 1 85N 3W
OFFICE FILE NO.
85301c_112305.tif



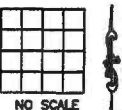
FIELD NOTES:
11-21-2005
MISC BK
2004-2005
P 78

PREVIOUSLY RECORDED IN BOOK NA, PAGE NA
MONUMENT DESCRIPTION AND HOW ESTABLISHED
PER TIES ON RECORD AT JONES COUNTY ENGINEER'S OFFICE, FOUND SPK
UNDER 2" OF ASPHALT. SET 5/8"x24" REBAR W/ORANGE CAP #14807
FLUSH WITH TOP OF NEW ASPHALT. TIES AS INDICATED FOR N1/4 CORNER
SECTION 1 T85N R3W.

CORNERS TO BE INDEXED

CORNER SECTION TOWNSHIP RANGE

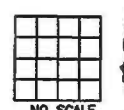
OFFICE FILE NO.



CORNERS TO BE INDEXED

CORNER SECTION TOWNSHIP RANGE

OFFICE FILE NO.



THIS IS NOT A CERTIFICATION

JONES COUNTY ENGINEER'S OFFICE, 19501 HWY. 64, ANAMOSA, IOWA, 52205 (319)462-3785

UNITED STATES PUBLIC LAND SURVEY CORNER CERTIFICATE

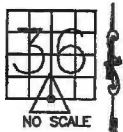
LAND SURVEY MONUMENTS SITUATED IN SECTION 36, TOWNSHIP 86
NORTH, RANGE 3 WEST OF THE 5TH P.M., JONES COUNTY, IOWA

CORNERS TO BE INDEXED

CORNER SECTION TOWNSHIP RANGE
S-QUARTER 36 86N 3W

OFFICE FILE NO.
86336w_082304.tif

DRAWN:
8-23-04



REF: JONES COUNTY SURVEY CREW 1963.
NORTHUP-THOMPSON-CROSS
BOOK 203, PAGE 40&77,

REDHEAD
IN HUB

THE TIES AS INDICATED ARE FROM
THE 1963 COUNTY SURVEY CREW
FOR THE NORTH QUARTER CORNER
OF SECTION 1-85-3. THE 4.95'
OFFSET TO THE SOUTH QUARTER
CORNER OF SECTION 36-86-3 IS
PER ORIGINAL SURVEY NOTES.

DAN JOHNSON

FOUND SPIKE WITH RIBBON IN CENTER OF ROAD IN JULY, 1991. COUNTY
SURVEY CREW FOUND IRON PIN IN OCTOBER OF 1985. COUNTY SURVEY
CREW FOUND CONCRETE MONUMENT WITH IRON ROD THROUGH CENTER
1.5' BELOW ROAD SURFACE PRIOR TO REGRADING IN 1963. THE ORIGINAL
CONCRETE MONUMENT IS PROBABLY STILL BELOW THE ROAD SURFACE.
NORTH QUARTER CORNER SECTION 1, TOWNSHIP 85 NORTH, RANGE 3 WEST
OF THE 5TH PM, JONES COUNTY, IOWA.

PREVIOUSLY RECORDED IN BOOK _____, PAGE _____
MONUMENT DESCRIPTION AND HOW ESTABLISHED THERE

ARE NO TIES FOR THE SOUTH QUARTER CORNER OF SECTION 1, TOWNSHIP 86 NORTH,
RANGE 3 WEST OF THE 5TH PRINCIPAL MERIDIAN, JONES COUNTY, IOWA. THE TIES
AS INDICATED ARE FOR THE NORTH QUARTER CORNER OF SECTION 1, TOWNSHIP 85
NORTH, RANGE 3 WEST OF THE 5TH PRINCIPAL MERIDIAN, JONES COUNTY, IOWA.
THIS IS A CORRECTION TOWNSHIP LINE.

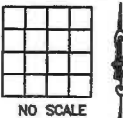
12/54

86336w-011045.tif

CORNERS TO BE INDEXED

CORNER SECTION TOWNSHIP RANGE

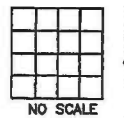
OFFICE FILE NO.



CORNERS TO BE INDEXED

CORNER SECTION TOWNSHIP RANGE

OFFICE FILE NO.



PREVIOUSLY RECORDED IN BOOK _____, PAGE _____
MONUMENT DESCRIPTION AND HOW ESTABLISHED _____

PREVIOUSLY RECORDED IN BOOK _____, PAGE _____
MONUMENT DESCRIPTION AND HOW ESTABLISHED _____

I hereby declare that this plat, survey or report
was made by me or under my direct personal
supervision and that I am a duly registered Land
Surveyor under the laws of the State of Iowa.

Signed:

SEAL

JONES COUNTY
ENGINEER'S OFFICE

19501 HWY. 64,
ANAMOSA, IOWA,
52205 (319)462-3785

SECTION CORNER CERTIFICATE

OF
LAND SURVEY MONUMENTS SITUATED IN SECTION 1, TOWNSHIP 85 NORTH,
RANGE 3 WEST, OF THE FIFTH PRINCIPAL MERIDIAN, JONES, COUNTY, IOWA.

PREVIOUSLY RECORDED IN BOOK _____ AT PAGE _____.

FOR RECORDER'S USE

REASON FOR PREPARING CERTIFICATE:

- ☒ A) THERE IS NO CERTIFICATE FOR THE CORNER ON FILE WITH THE RECORDER OF THE COUNTY IN WHICH THE CORNER IS LOCATED.
- ☐ B) CORNER POSITION DIFFERS FROM THAT SHOWN IN THE PUBLIC RECORDS OF THE COUNTY IN WHICH THE CORNER IS LOCATED.
- ☐ C) THE CORNER MONUMENT HAS BEEN REPLACED OR MODIFIED.
- ☐ D) THE REFERENCE TIES REFERRED TO IN AN EXISTING PUBLIC RECORD ARE INCORRECT.

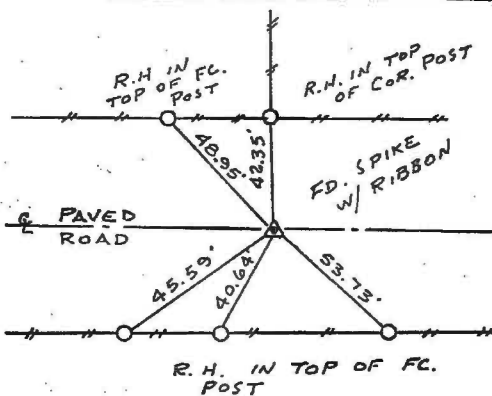
MONUMENT DESCRIPTION AND REMARKS:

N 1/4 CORNER SECTION 1-T85N-R3W FOUND SPIKE NAIL W/ RIBBON ON E
COUNTY PAVED ROAD FLUSH WITH SURFACE

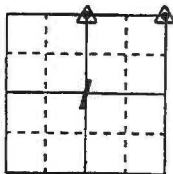
N.E. CORNER SECTION 1-T85N-R3W FOUND 5/8" REBAR 3" DEEP ON E
COUNTY ROAD

RECOVERY TIE DRAWING

N 1/4 Cor. 1-85-3

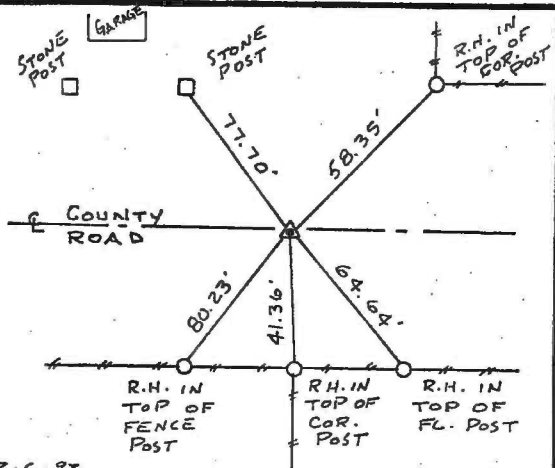


ON CARD 2-6-92 M.S.



NOT TO SCALE

N.E. Cor. 1-85-3



2-6-92

I, DANIEL J. JOHNSON, CERTIFY THAT THE CORNER LOCATION(S) SHOWN ON THIS RECORD WERE DETERMINED BY ME OR UNDER MY DIRECTION AND CONTROL AND THAT THIS U.S. PUBLIC LAND SURVEY MONUMENT RECORD IS CORRECT AND COMPLETE TO THE BEST OF MY KNOWLEDGE AND BELIEF.

Daniel J. Johnson
DANIEL J. JOHNSON

L.S. NO 11954

1-7-91
DATE



GOVERNMENT CORNER
5/8" DE PIN SET
CENTERLINE
EXISTING FENCE LINE
R.O.W. LINE

SHEET TITLE: U.S. PUBLIC LAND SURVEY RECORD.

PROJECT TITLE: M E MULLIN SURVEY



HALL AND HALL ENGINEERS, INC.
226 29TH STREET DRIVE S.E.
CEDAR RAPIDS, IOWA 52403
319-362-9548

DWN R.W.B.

CHK D.J.J.

APP

DATE 1-3-92

SCALE NONE

FNO 0T23

PNO 4571

85301c - 010791 , 85301e - 010791