

Instrument #: 2024-0919  
 04/29/2024 08:53:20 AM Total Pages: 1  
 ZSC SECTION CORNER CERTIFICATE  
 Recording Fee: \$7.00 Transfer Tax: \$0  
 Sheri L. Jones, Recorder, Jones County Iowa



PREPARED BY: RANDALL L. RATTENBORG 105 WEST MAIN STREET MANCHESTER, IA 52057, 563-927-2434

# UNITED STATES PUBLIC LAND SURVEY CORNER CERTIFICATE

Land Survey Monuments situated in Section 34, Township 86 North, Range 2 West of the Fifth Principal Meridian,  
Jones County, Iowa.

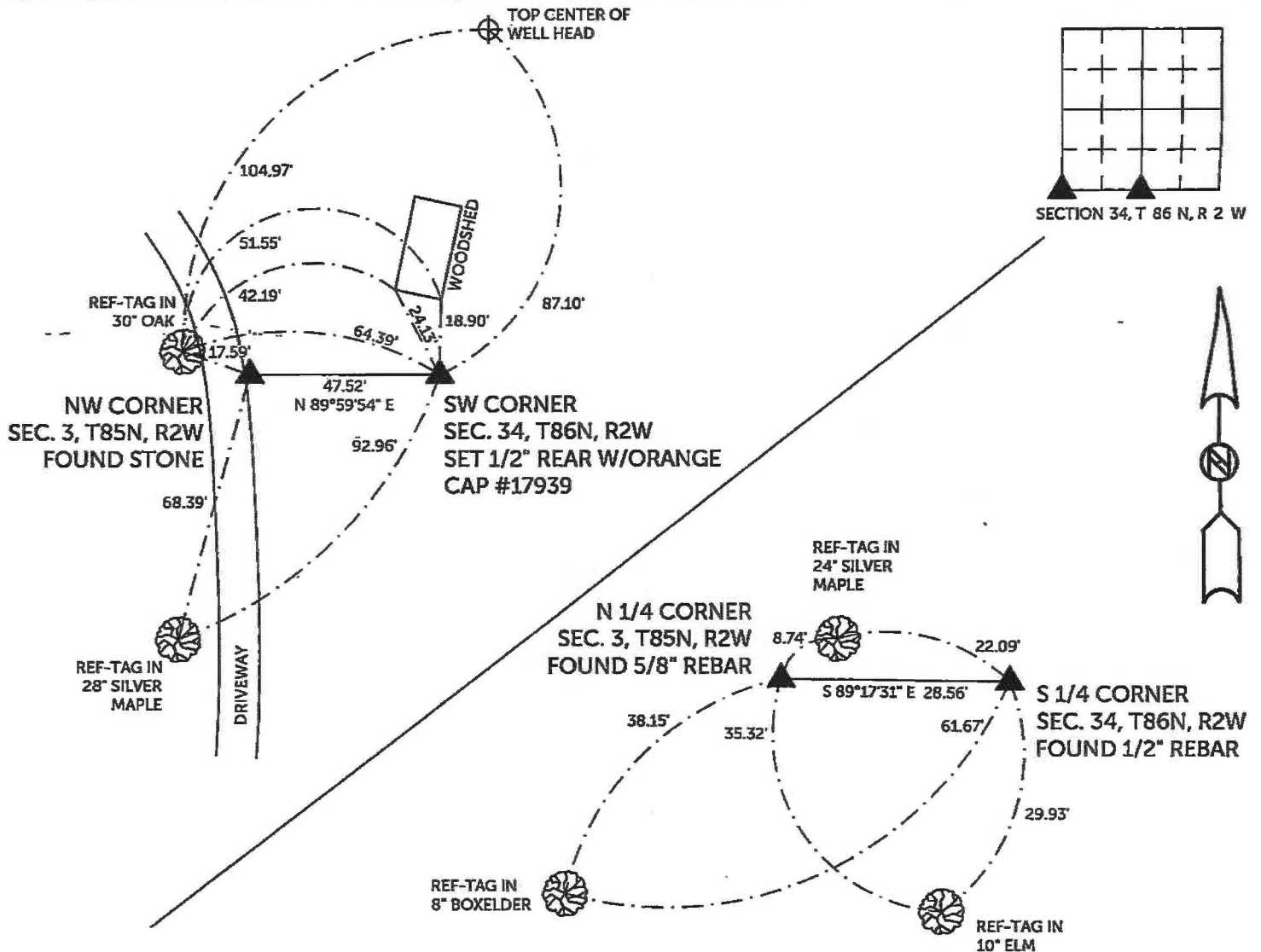
Previously recorded in County Recorder's Office in SEE DESCRIPTIONS  
(book, page, document number, etc)

SW CORNER, Set 1/2" rebar w/orange cap #17939 47.52 feet east of and on the line between the NW corner and N 1/4 Corner of Sec. 3, T85N, R2W. This distance is shown on the GLO maps as 72 links east of the NW Corner of said Section 3 and is also shown as 47.52 feet east of the NW Corner of said Section 3 in the plat of Parcel 2000-08 as recorded in Instrument #2000-1101. The corner certificate in Instrument # 2000-0199 is shown as a stone at the SW corner of section 34. I believe this is in error and this stone should be the NW Corner of Section 3, T85N, R2W.

S 1/4 CORNER, Found 1/2" rebar as per Corner Certificate recorded in Instrument #2000-1101.

## PLAN VIEW

(Show a minimum of three reference ties to durable physical objects, relevant monuments and physical conditions that will enable recovery of the corner.)



TIES ARE TO PLAT PARCEL 2024-16 & 17  
 IN SECTION 34, T 86 N, R 2 W

BURRINGTON-GROUP, INC. PROJECT NO. 23-144

I HEREBY CERTIFY THAT THIS LAND SURVEYING DOCUMENT WAS PREPARED AND THE RELATED SURVEY WORK WAS PERFORMED BY ME OR UNDER MY DIRECT PERSONAL SUPERVISION AND THAT I AM A DULY LICENSED PROFESSIONAL LAND SURVEYOR UNDER THE LAWS OF THE STATE OF IOWA.

*[Signature]* 4/26/2024  
 Randall L. Rattenborg, P.L.S. License #17939 Date  
 My license renewal date is December 31, 2025  
 List Corners to be Indexed: Section Township Range

SW CORNER	34	T 86N	R 2 W
S 1/4 CORNER			

SEAL COVERS THIS SHEET ONLY



**BURRINGTON GROUP, INC.**  
 Civil Engineering | Land Surveying  
 105 W. Main Street Manchester, Iowa 52057

Instrument #: 2024-0920  
 04/29/2024 08:53:20 AM Total Pages: 1  
 ZSC SECTION CORNER CERTIFICATE  
 Recording Fee: \$7.00 Transfer Tax: \$0  
 Sheri L. Jones, Recorder, Jones County Iowa



PREPARED BY: RANDALL L. RATTENBORG 105 WEST MAIN STREET MANCHESTER, IA 52057, 563-927-2434

# UNITED STATES PUBLIC LAND SURVEY CORNER CERTIFICATE

Land Survey Monuments situated in Section 3, Township 85 North, Range 2 West of the Fifth Principal Meridian,  
Jones County, Iowa.

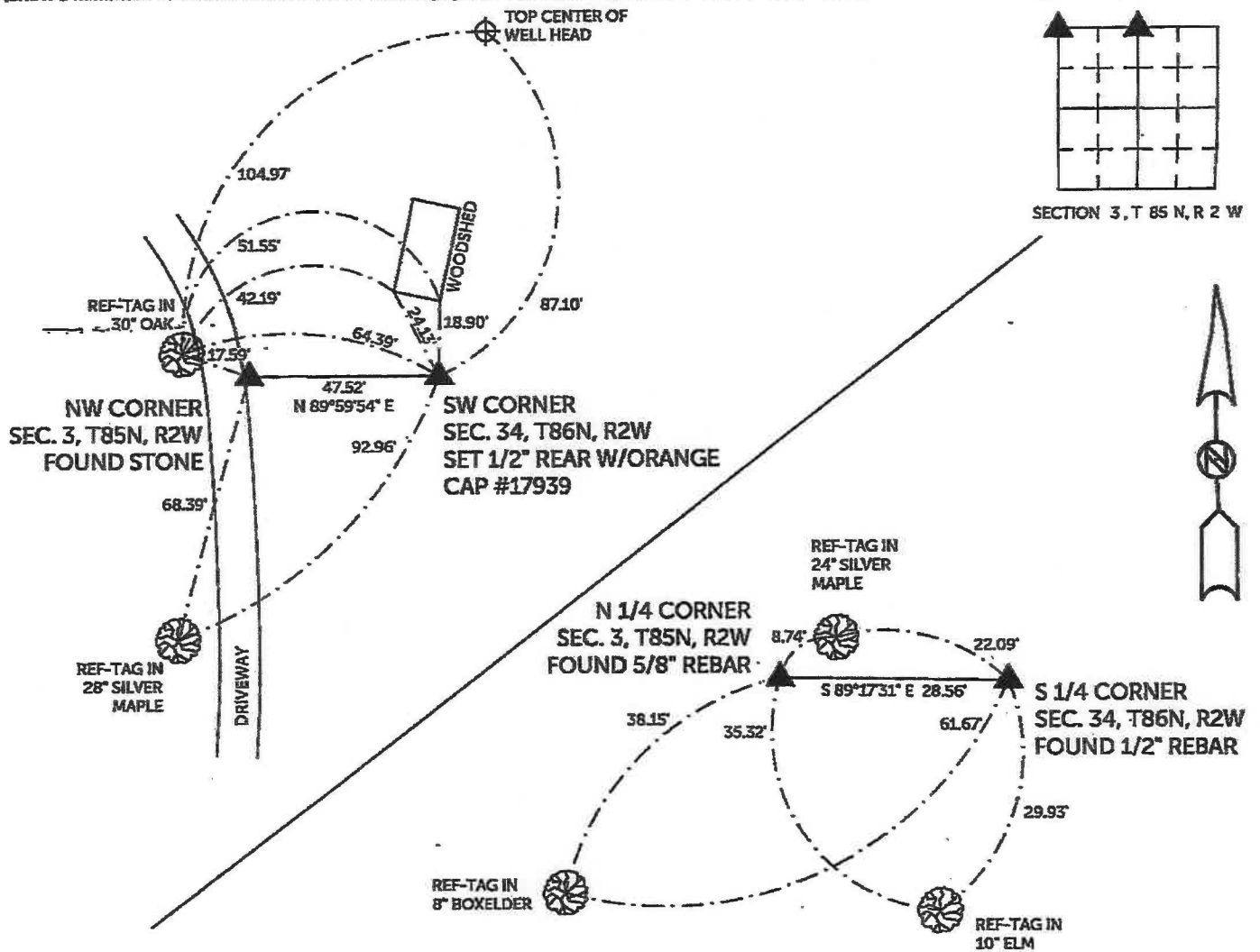
Previously recorded in County Recorder's Office in SEE DESCRIPTIONS  
(book, page, document number, etc.)

NW CORNER, Found stone. The corner certificate in Instrument # 2000-0199 is shown as a stone at the SW corner of section 34. I believe this is in error and this stone should be the NW Corner of Section 3, T85N, R2W.

N 1/4 CORNER, Found 5/8" rebar as per Corner Certificate recorded in Instrument #2000-0199.

## PLAN VIEW

(Show a minimum of three reference ties to durable physical objects, relevant monuments and physical conditions that will enable recovery of the corner.)



TIES ARE TO PLAT PARCEL 2024-16 & 17  
 IN SECTION 3, T 85 N, R 2 W

BURRINGTON GROUP, INC. PROJECT NO. 23-144

I HEREBY CERTIFY THAT THIS LAND SURVEYING DOCUMENT WAS PREPARED AND THE RELATED SURVEY WORK WAS PERFORMED BY ME OR UNDER MY DIRECT PERSONAL SUPERVISION AND THAT I AM A DULY LICENSED PROFESSIONAL LAND SURVEYOR UNDER THE LAWS OF THE STATE OF IOWA.

SEAL COVERS THIS SHEET ONLY



*[Signature]* 4/26/2024  
 Randall L. Rattenborg, P.L.S. License #17939 Date  
 My license renewal date is December 31, 2025

List Corners to be Indexed:	Section	Township	Range
NW CORNER	3	T 85N	R 2 W
N 1/4 CORNER			

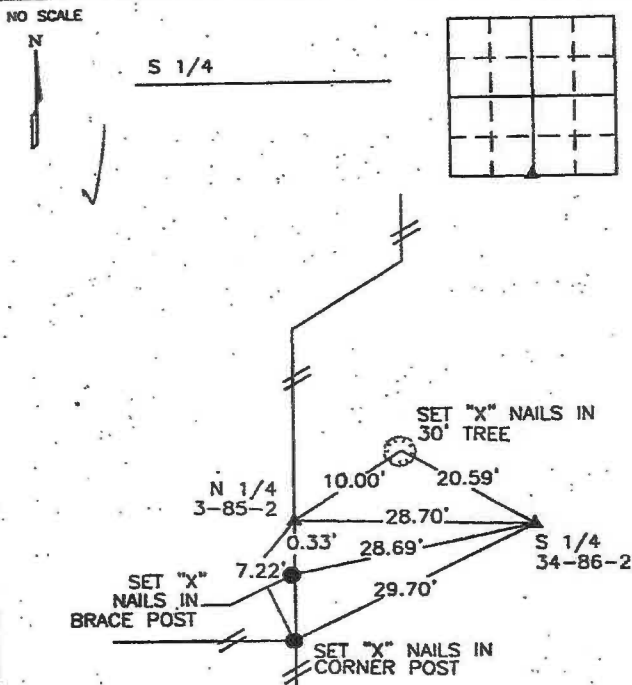
**BURRINGTON GROUP, INC.**  
 Civil Engineering | Land Surveying  
 105 W. Main Street Manchester, Iowa 52057

2000 0199  
 FILED  
 RECORDERS OFFICE  
 JONES COUNTY IOWA  
 00 JAN 18 PM 12:14  
 MARIE KRUTZFIELD  
 RECORDER 6.00 pcl

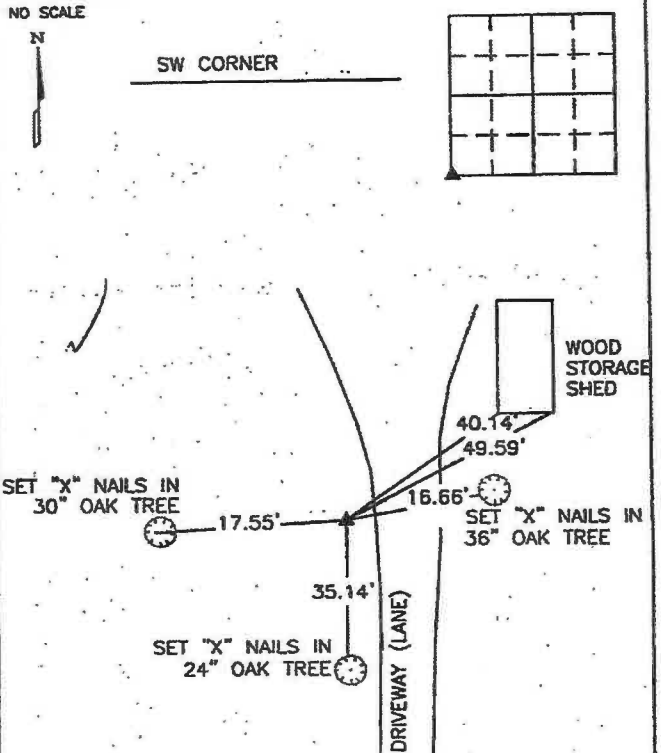
CLARENCE J. WALTON, BRAIN ENGINEERING, INC., 777 10TH STREET, MARION, IOWA 52302 PH. (319) 373-1318

## UNITED STATES PUBLIC LAND SURVEY CORNER CERTIFICATE

LAND SURVEY MONUMENTS SITUATED IN SECTION 34, TOWNSHIP 86 NORTH  
 RANGE 2 WEST OF THE 5TH P.M., JONES COUNTY, IOWA.



PREVIOUSLY RECORDED IN BOOK \_\_\_\_\_ PAGE \_\_\_\_\_  
 MONUMENT DESCRIPTION AND HOW ESTABLISHED \_\_\_\_\_  
 FOUND 1/2" REBAR WITH RED CAP #8295



PREVIOUSLY RECORDED IN BOOK \_\_\_\_\_ PAGE \_\_\_\_\_  
 MONUMENT DESCRIPTION AND HOW ESTABLISHED \_\_\_\_\_  
 FOUND 3' X 6" STONE.



I hereby certify that this land surveying document and the related survey work was performed by me or under my direct personal supervision and that I am a duly licensed Land Surveyor under the laws of the State of Iowa.  
 Signed Clarence J. Walton Date 01/14/2000  
 Clarence J. Walton, L.S.  
 My License Renewal Date is December 31, 2001  
 License Number 11310  
 Pages or sheets covered by this seal: PAGES

CORNERS TO BE INDEXED			
CORNER	SECTION	TOWNSHIP	RANGE
S 1/4	34	T86N	R2W
SW CORNER	34	T86N	R2W

**BRAIN ENGINEERING, INC.**  
 777 10TH STREET  
 MARION, IOWA 52302  
 (319) 373-1318

25599-10

# THIS IS NOT A CERTIFICATION

JONES COUNTY ENGINEER'S OFFICE, 19501 HWY. 64, ANAMOSA, IOWA, 52205 (319)462-3785

## UNITED STATES PUBLIC LAND SURVEY CORNER CERTIFICATE

LAND SURVEY MONUMENTS SITUATED IN SECTION 04, TOWNSHIP 85  
NORTH, RANGE 2 WEST OF THE 5TH P.M., JONES COUNTY, IOWA

**CORNERS TO BE INDEXED**

CORNER NORTHEAST	SECTION 04	TOWNSHIP 85N	RANGE 2W
---------------------	---------------	-----------------	-------------

OFFICE FILE NO. \_\_\_\_\_

NO SCALE

NOTE:  
ALL DISTANCES  
SLOPE CHAINED.

BLAZED 24' OAK

BLAZED 36" OAK

BLAZED 30" OAK

BLAZED 18" OAK

FOUND STONE  
NE-4-85-2

REF:  
JONES COUNTY SURVEY CREW:  
3-17-84

PREVIOUSLY RECORDED IN BOOK \_\_\_\_\_, PAGE \_\_\_\_\_  
MONUMENT DESCRIPTION AND HOW ESTABLISHED FOUND

STONE. (SIZE OR TYPE NOT INDICATED) TIES AS INDICATED. NORTHEAST CORNER SECTION 4, TOWNSHIP 85 NORTH, RANGE 2 WEST OF THE 5TH PRINCIPAL MERIDIAN, JONES COUNTY, IOWA.

**CORNERS TO BE INDEXED**

CORNER	SECTION	TOWNSHIP	RANGE
--------	---------	----------	-------

OFFICE FILE NO. \_\_\_\_\_

NO SCALE

CORNER TIES FOR THE SOUTHWEST CORNER OF SECTION 34, T86N, R2W (2000-0199) FILED BY BRAIN ENGINEERING INDICATES FINDING A 3"X6" STONE WEST OF NORTH-SOUTH DRIVEWAY.

PREVIOUSLY RECORDED IN BOOK \_\_\_\_\_, PAGE \_\_\_\_\_  
MONUMENT DESCRIPTION AND HOW ESTABLISHED \_\_\_\_\_

**CORNERS TO BE INDEXED**

CORNER N-QUARTER	SECTION 04	TOWNSHIP 85N	RANGE 2W
---------------------	---------------	-----------------	-------------

OFFICE FILE NO. \_\_\_\_\_

NO SCALE

NOTE:  
ALL DISTANCES  
SLOPE CHAINED.

BLAZED 18" TREE

BLAZED 24" TREE

BLAZED 30" TREE

SET 2 1/2" PIPE  
NORTH QUARTER  
COR. 4-85-2

REF:  
JONES COUNTY SURVEY CREW:  
3-17-84

**CORNERS TO BE INDEXED**

CORNER	SECTION	TOWNSHIP	RANGE
--------	---------	----------	-------

OFFICE FILE NO. \_\_\_\_\_

NO SCALE