

Instrument #: 2024-0919
 04/29/2024 08:53:20 AM Total Pages: 1
 ZSC SECTION CORNER CERTIFICATE
 Recording Fee: \$7.00 Transfer Tax: \$0
 Sheri L. Jones, Recorder, Jones County Iowa



PREPARED BY: RANDALL L. RATTENBORG 105 WEST MAIN STREET MANCHESTER, IA 52057, 563-927-2434

UNITED STATES PUBLIC LAND SURVEY CORNER CERTIFICATE

Land Survey Monuments situated in Section 34, Township 86 North, Range 2 West of the Fifth Principal Meridian,
Jones County, Iowa.

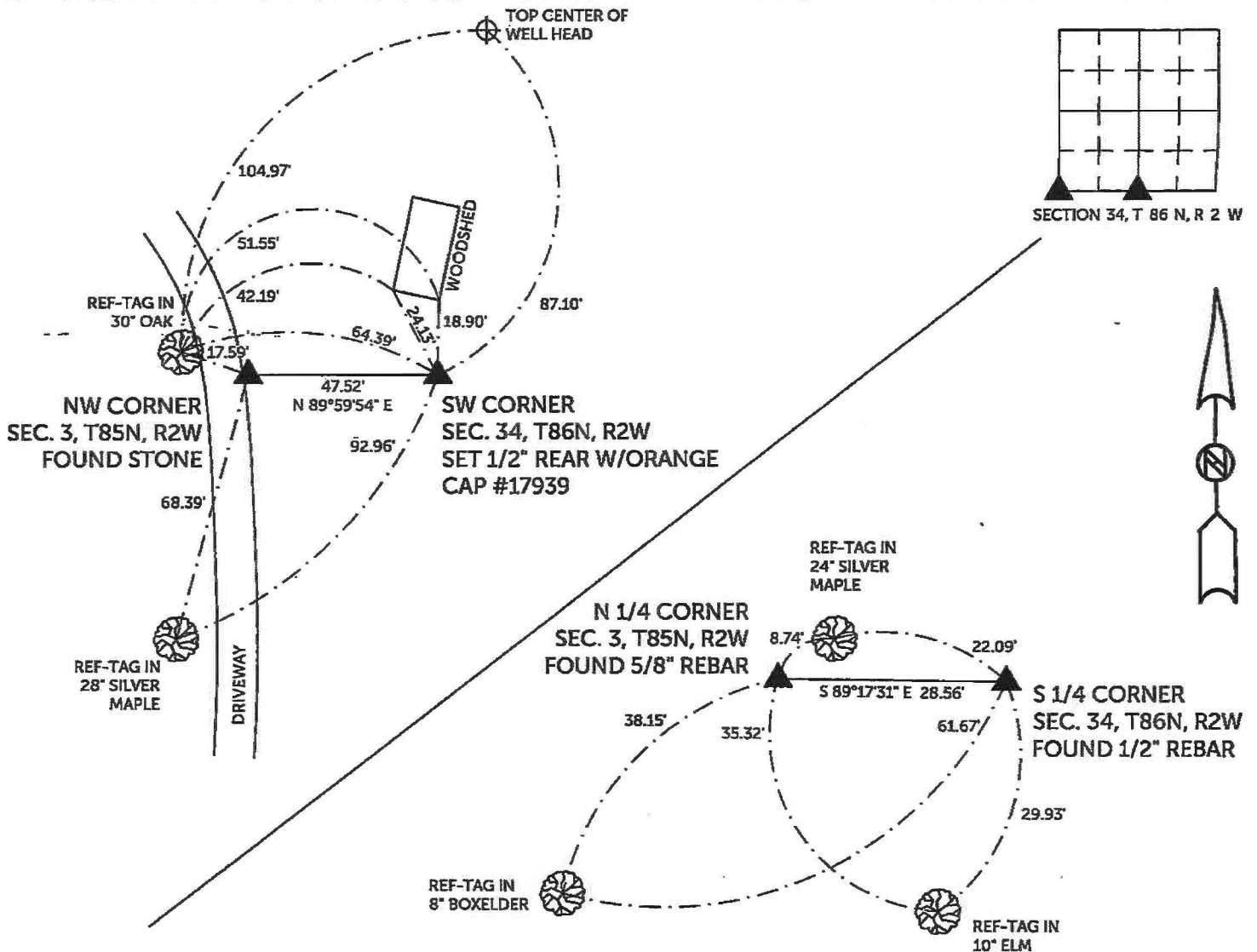
Previously recorded in County Recorder's Office in SEE DESCRIPTIONS
(book, page, document number, etc)

SW CORNER, Set 1/2" rebar w/orange cap #17939 47.52 feet east of and on the line between the NW corner and N 1/4 Corner of Sec. 3, T85N, R2W. This distance is shown on the GLO maps as 72 links east of the NW Corner of said Section 3 and is also shown as 47.52 feet east of the NW Corner of said Section 3 in the plat of Parcel 2000-08 as recorded in Instrument #2000-1101. The corner certificate in Instrument # 2000-0199 is shown as a stone at the SW corner of section 34. I believe this is in error and this stone should be the NW Corner of Section 3, T85N, R2W.

S 1/4 CORNER, Found 1/2" rebar as per Corner Certificate recorded in Instrument #2000-1101.

PLAN VIEW

(Show a minimum of three reference ties to durable physical objects, relevant monuments and physical conditions that will enable recovery of the corner.)



TIES ARE TO PLAT PARCEL 2024-16 & 17
 IN SECTION 34, T 86 N, R 2 W

BURRINGTON-GROUP, INC. PROJECT NO.23-144

I HEREBY CERTIFY THAT THIS LAND SURVEYING DOCUMENT WAS PREPARED AND THE RELATED SURVEY WORK WAS PERFORMED BY ME OR UNDER MY DIRECT PERSONAL SUPERVISION AND THAT I AM A DULY LICENSED PROFESSIONAL LAND SURVEYOR UNDER THE LAWS OF THE STATE OF IOWA.

SEAL COVERS THIS SHEET ONLY

[Signature] 4/26/2024
 Randall L. Rattenborg, P.L.S. License #17939 Date
 My license renewal date is December 31, 2025
 List Corners to be Indexed: Section Township Range



SW CORNER	34	T 86N	R 2 W
S 1/4 CORNER			

BURRINGTON GROUP, INC.
 Civil Engineering | Land Surveying
 105 W. Main Street Manchester, Iowa 52057

Instrument #: 2024-0920
 04/29/2024 08:53:20 AM Total Pages: 1
 ZSC SECTION CORNER CERTIFICATE
 Recording Fee: \$7.00 Transfer Tax: \$0
 Sheri L. Jones, Recorder, Jones County Iowa



PREPARED BY: RANDALL L. RATTENBORG 105 WEST MAIN STREET MANCHESTER, IA 52057, 563-927-2434

UNITED STATES PUBLIC LAND SURVEY CORNER CERTIFICATE

Land Survey Monuments situated in Section 3, Township 85 North, Range 2 West of the Fifth Principal Meridian,
Jones County, Iowa.

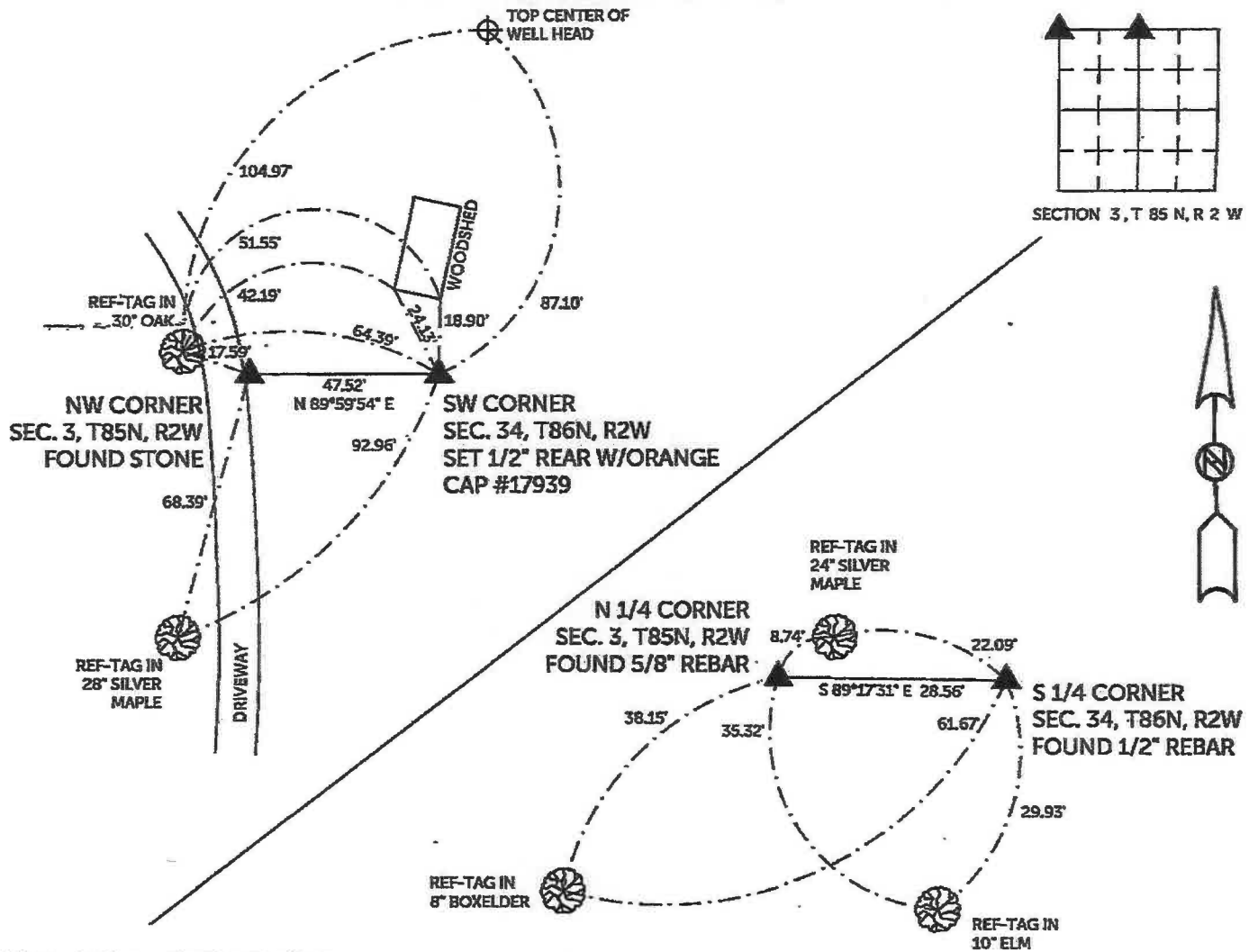
Previously recorded in County Recorder's Office in SEE DESCRIPTIONS
(book, page, document number, etc.)

NW CORNER, Found stone. The corner certificate in Instrument # 2000-0199 is shown as a stone at the SW corner of section 34. I believe this is in error and this stone should be the NW Corner of Section 3, T85N, R2W.

N 1/4 CORNER, Found 5/8" rebar as per Corner Certificate recorded in Instrument #2000-0199.

PLAN VIEW

(Show a minimum of three reference ties to durable physical objects, relevant monuments and physical conditions that will enable recovery of the corner.)



TIES ARE TO PLAT PARCEL 2024-16 & 17
 IN SECTION 3, T 85 N, R 2 W

BURRINGTON GROUP, INC. PROJECT NO. 23-144

I HEREBY CERTIFY THAT THIS LAND SURVEYING DOCUMENT
 WAS PREPARED AND THE RELATED SURVEY WORK WAS
 PERFORMED BY ME OR UNDER MY DIRECT PERSONAL
 SUPERVISION AND THAT I AM A DULY LICENSED PROFESSIONAL
 LAND SURVEYOR UNDER THE LAWS OF THE STATE OF IOWA.

SEAL COVERS THIS SHEET ONLY



[Signature] 4/26/2024
 Randall L. Rattenborg, P.L.S. License #17939 Date
 My license renewal date is December 31, 2025
 List Corners to be Indexed: Section Township Range
 NW CORNER 3 T 85N R 2 W
 N 1/4 CORNER

BURRINGTON GROUP, INC.
 Civil Engineering | Land Surveying
 105 W. Main Street Manchester, Iowa 52057

2000 0199
 FILED
 RECORDERS OFFICE
 JONES COUNTY IOWA

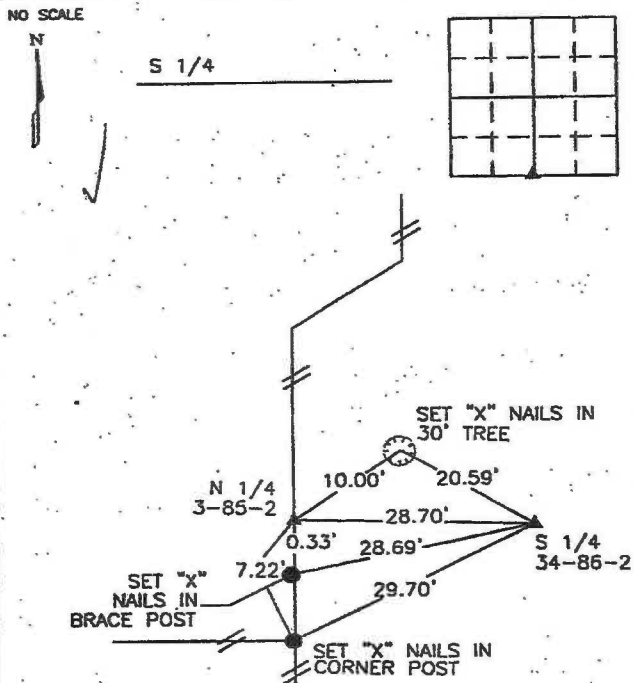
00 JAN 18 PM 12:14

MARIE KRUTZFIELD
 RECORDER 6.00 per

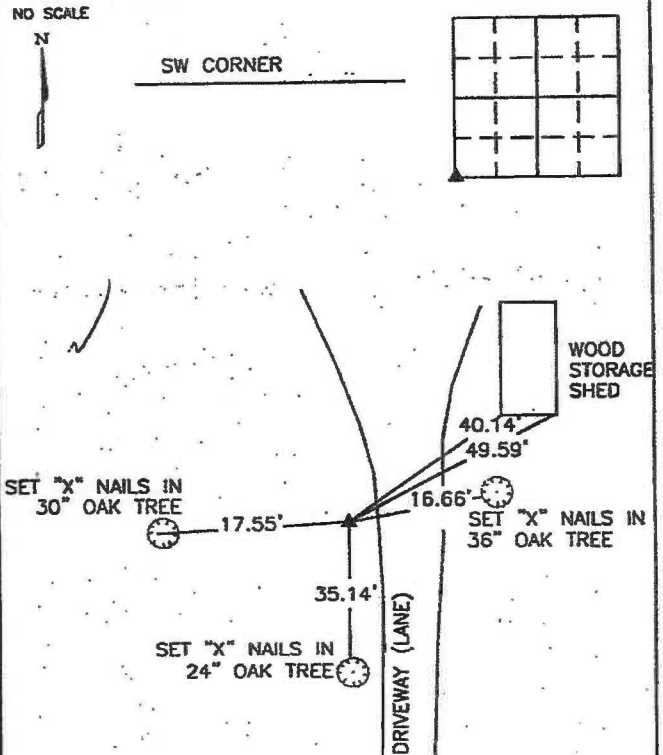
CLARENCE J. WALTON, BRAIN ENGINEERING, INC., 777 10TH STREET, MARION, IOWA 52302 PH. (319) 373-1318

UNITED STATES PUBLIC LAND SURVEY CORNER CERTIFICATE

LAND SURVEY MONUMENTS SITUATED IN SECTION 34, TOWNSHIP 86 NORTH
 RANGE 2 WEST OF THE 5TH P.M., JONES COUNTY, IOWA.



PREVIOUSLY RECORDED IN BOOK _____ PAGE _____
 MONUMENT DESCRIPTION AND HOW ESTABLISHED _____
 FOUND 1/2" REBAR WITH RED CAP #8295



PREVIOUSLY RECORDED IN BOOK _____ PAGE _____
 MONUMENT DESCRIPTION AND HOW ESTABLISHED _____
 FOUND 3' X 6" STONE.



I hereby certify that this land surveying document and the related survey work was performed by me or under my direct personal supervision and that I am a duly licensed Land Surveyor under the laws of the State of Iowa.
 Signed _____ Date _____

Clarence J. Walton, L.S.
 My License Renewal Date is December 31, 2001
 License Number 11310
 Pages or sheets covered by this seal: PAGES _____

CORNERS TO BE INDEXED			
CORNER	SECTION	TOWNSHIP	RANGE
S 1/4	34	T86N	R2W
SW CORNER	34	T86N	R2W

BRAIN ENGINEERING, INC.
 777 10TH STREET
 MARION, IOWA 52302
 (319) 373-1318

25599-10

THIS IS NOT A CERTIFICATION

JONES COUNTY ENGINEER'S OFFICE, 19501 HWY. 64, ANAMOSA, IOWA, 52205 (319)462-3785

UNITED STATES PUBLIC LAND SURVEY CORNER CERTIFICATE

LAND SURVEY MONUMENTS SITUATED IN SECTION 3, TOWNSHIP 85
NORTH, RANGE 2 WEST OF THE 5TH P.M., JONES COUNTY, IOWA

