

J.D. TJEPKES, LS. JONES COUNTY ENGINEER'S OFFICE, 19501 HWY. 64, ANAMOSA, IOWA, 52205 (319)462-3785

UNITED STATES PUBLIC LAND SURVEY CORNER CERTIFICATE

LAND SURVEY MONUMENTS SITUATED IN SECTION 35, TOWNSHIP 85
NORTH, RANGE 2 WEST OF THE 5TH P.M., JONES COUNTY, IOWA

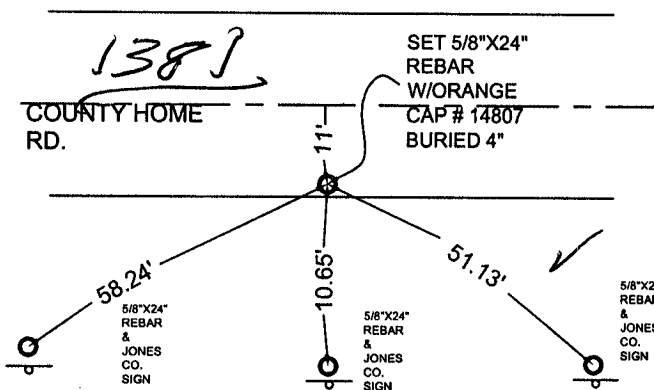
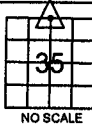
CORNERS TO BE INDEXED

CORNER SECTION TOWNSHIP RANGE
N1/4 35 85N 2W

OFFICE FILE NO.

85235c_071003.jpg

FIELD
NOTES:
5-27-03
BK 366
P 13



PREVIOUSLY RECORDED IN BOOK NA, PAGE NA
MONUMENT DESCRIPTION AND HOW ESTABLISHED

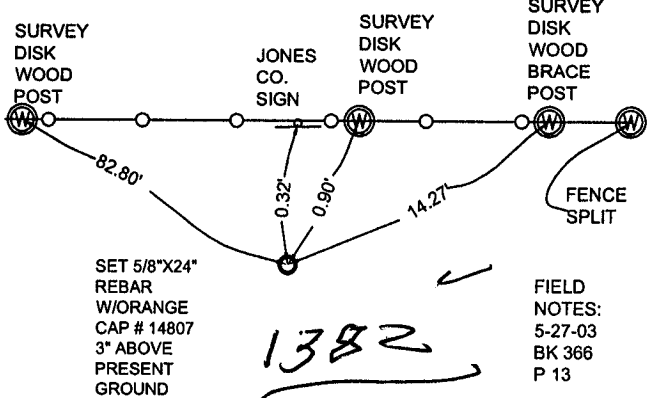
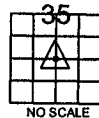
PER PROPORTIONATE MEASUREMENTS FROM NW CORNER SEC 35 TO NE
CORNER SEC 35 SET 5/8"X24" REBAR W/ORANGE CAP #14807 ON SPLIT.
BURIED 4" IN SOUTH EDGE OF ROAD. TIES AS INDICATED.

CORNERS TO BE INDEXED

CORNER SECTION TOWNSHIP RANGE
CENTER 35 85N 2W

OFFICE FILE NO.

85235m_071003.jpg



PREVIOUSLY RECORDED IN BOOK NA, PAGE NA
MONUMENT DESCRIPTION AND HOW ESTABLISHED

PER BREAKDOWN OF SECTION 35, CROSSING OF QT CORNERS, SET
5/8"X24" REBAR W/ORANGE CAP #14807, ON SOUTH SIDE OF FENCE
RUNNING EAST-WEST. REBAR 3" ABOVE PRESENT GROUND. TIES AS
INDICATED.

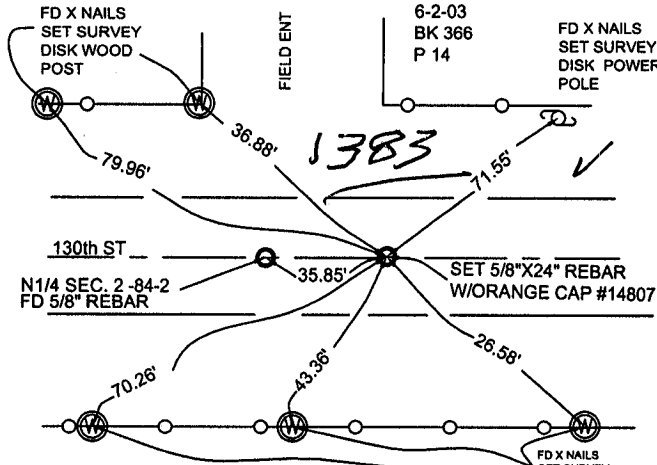
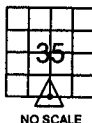
CORNERS TO BE INDEXED

CORNER SECTION TOWNSHIP RANGE
S1/4 35 85N 2W

OFFICE FILE NO.

85235w_071003.jpg

FIELD
NOTES:
6-2-03
BK 366
P 14



PREVIOUSLY RECORDED IN BOOK NA, PAGE NA
MONUMENT DESCRIPTION AND HOW ESTABLISHED

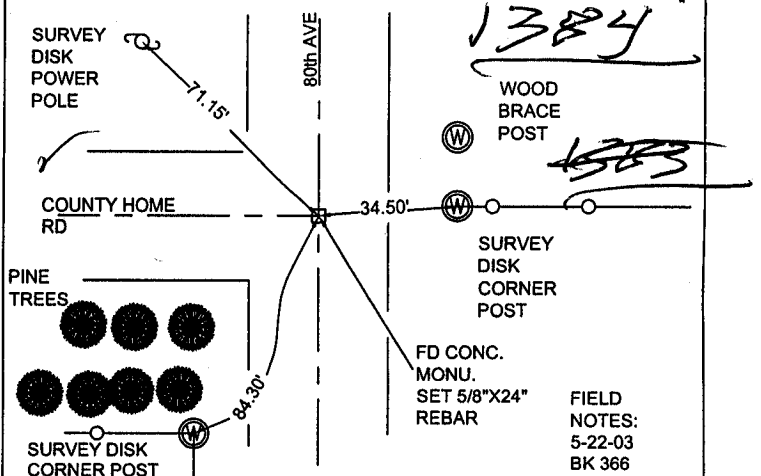
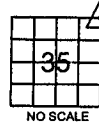
PER PROPORTIONATE DISTANCE BETWEEN SE CORNER SEC.35 & SW
CORNER SEC. 35, SET 5/8"X24" REBAR, W/ ORANGE CAP #14807, EQUAL
DISTANCE AND ON LINE, IN ROAD BED, BURIED 4". TIES AS INDICATED.

CORNERS TO BE INDEXED

CORNER SECTION TOWNSHIP RANGE
NE 35 85N 2W

OFFICE FILE NO.

85235e_071003.jpg



PREVIOUSLY RECORDED IN BOOK NA, PAGE NA
MONUMENT DESCRIPTION AND HOW ESTABLISHED

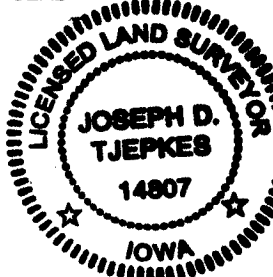
PER DOT TIES RECORDED IN JONES CO. ENGINEER'S OFFICE DATED 1955,
PROJECT F-814(3), FOUND CONC. MONU. WITH IRON PIN BURIED 30" IN
CENTER OF INTERSECTION OF COUNTY HOME RD & 80th AVE. SET 5/8"X24"
REBAR ON TOP OF MONU. BURIED 6" & RETIED AS INDICATED.

I hereby declare that this plat, survey or report
was made by me or under my direct personal
supervision and that I am a duly registered Land
Surveyor under the laws of the State of Iowa.

Signed:

Joseph D. Tjepkes 7.10.05
Joseph D. Tjepkes L.S. Iowa Reg. No. 14807
My Registration Renewal Date is December 31, 2004

SEAL



J.D. TJEPKES LS 14807
JONES COUNTY
ENGINEER'S OFFICE

19501 HWY. 64,
ANAMOSA, IOWA,
52205 (319)462-3785