

Instrument #: 2024-2648
 11/14/2024 12:42:29 PM Total Pages: 1
 ZSC SECTION CORNER CERTIFICATE
 Recording Fee: \$7.00 Transfer Tax: \$0
 Sheri L. Jones, Recorder, Jones County Iowa



PREPARED BY: MICHAEL J. WEBER, WEBER SURVEYING, LLC, 26789 46TH AVE, BERNARD, IA 52032 (563) 879-4173

UNITED STATES PUBLIC LAND SURVEY CORNER CERTIFICATE OF
 LAND SURVEY MONUMENTS SITUATED IN SECTION 13, TOWNSHIP 83 NORTH, RANGE 1 WEST
 OF THE FIFTH PRINCIPAL MERIDIAN, JONES COUNTY, IOWA.
 PREVIOUSLY RECORDED INSTR. NO. 2004 0552

(book, page, document number, etc)

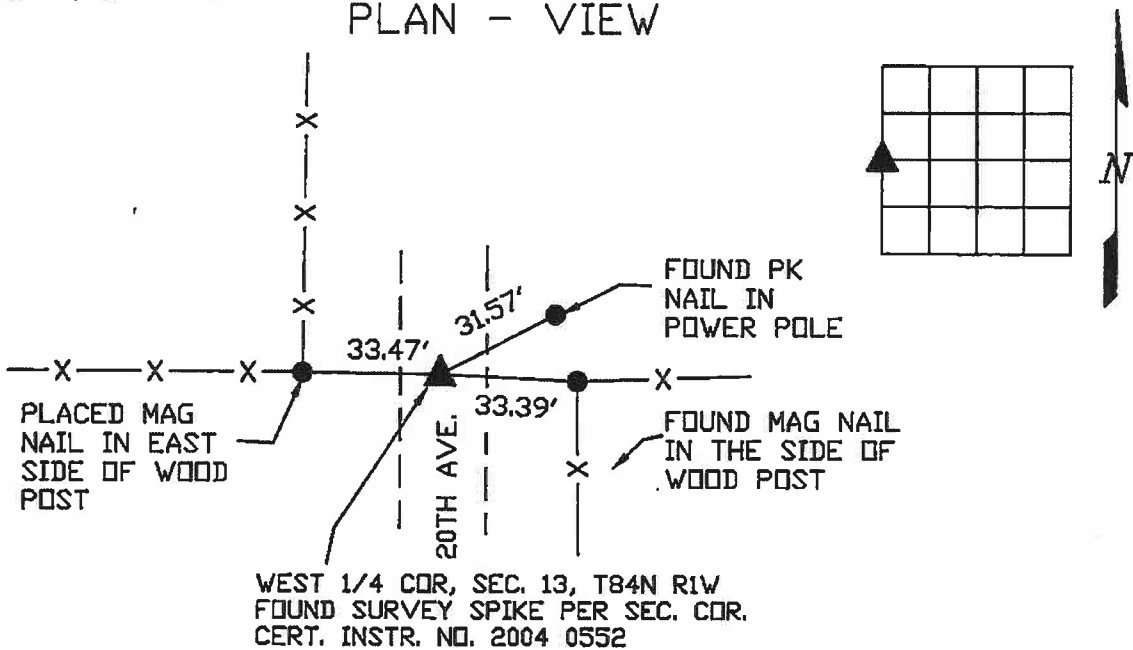
(Show reason for preparing this certificate, the evidence and detailed procedures used in establishing the corner positions and monumentation found or placed.)

Monument Description and Remarks:

-WEST 1/4 COR, SEC. 13, T84N R1W FOUND SURVEY SPIKE PREVIOUSLY RECORDED
 IN SEC. COR. CERT. INSTR. NO. 2004 0552. RE-ESTABLISHED TIES.

(Show a minimum of three reference ties to durable physical objects, relevant monuments and physical conditions that will enable recovery of the corner.)

PLAN - VIEW



	I HEREBY CERTIFY THAT THIS LAND SURVEYING DOCUMENT WAS PREPARED AND THE RELATED SURVEY WORK WAS PERFORMED BY ME OR UNDER MY DIRECT PERSONAL SUPERVISION AND THAT I AM A DULY LICENSED LAND SURVEYOR UNDER THE LAWS OF THE STATE OF IOWA. <i>Michael J. Weber</i> November 12, 2024 MICHAEL J. WEBER (DATE) LICENSE NUMBER 15084 MY LICENSE RENEWAL DATE IS DECEMBER 31, 2025	List Corners to be Indexed Corner Sec Twp Range WEST 1/4 COR., 13-83N-1W
	SHEETS COVERED BY THIS SEAL: <u>This Sheet</u>	DWG. 24025

2004 0552

FILED
RECORDERS OFFICE
JONES COUNTY IOWA

04 FEB 19 AM 9:58

MARIE KRUTZFIELD
RECORDER 11:00 Pd

PREPARED BY:
Landmark 511 South 4th Street
ENGINEERING GROUP, INC. Clinton, IA 52732
(563) 243-1398

SLSI 9-90

UNITED STATES PUBLIC LAND SURVEY CORNER CERTIFICATE
OF

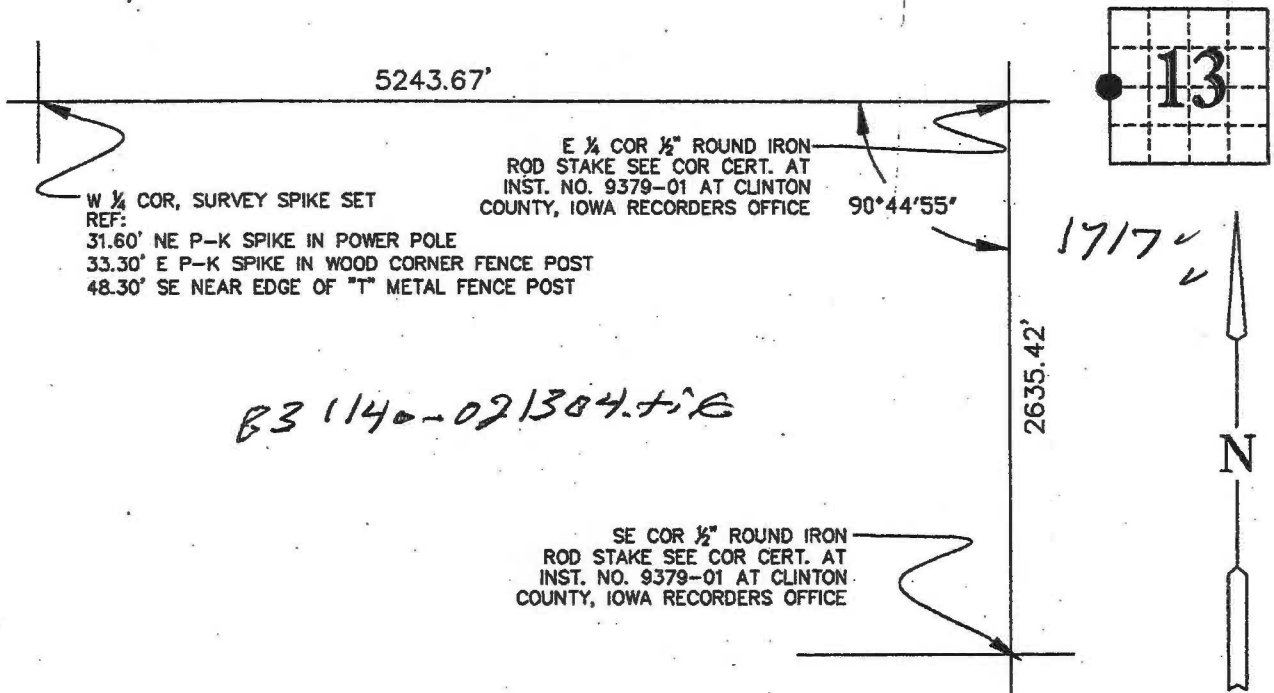
Land Survey Monuments situated in Section 13, Township 83 NORTH, Range 1 WEST, of the Fifth Principal Meridian, JONES County, Iowa.
Previously recorded in N/A, Page N/A in County Recorder's Office.

(Show reason for preparing this certificate, the evidence and detailed procedures used in establishing the corner positions and monumentation found or placed.)

Monument Description and Remarks: W 1/4 COR, SURVEY SPIKE SET MIDWAY BETWEEN ROAD FENCES
IN LINE WITH ANCIENT FENCES LINE EAST AND WEST, AND IN
THE MIDDLE OF A 26' WIDE GRAVEL ROADBED, SEARCH AREA 10'

PLAN - VIEW

(Show a minimum of three reference ties to durable physical objects, relevant monuments and physical conditions that will enable recovery of the corner.)



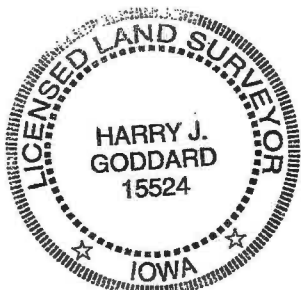
I hereby certify that this land surveying document was prepared and the related survey work was performed by me or under my direct personal supervision and that I am a duly licensed land surveyor under the laws of the State of Iowa.

Harry J. Goddard Feb 13, 2004
Harry J. Goddard Date

My license is subject to renewal on Dec. 31, 2004
License No. 15524

List Corners to be Indexed

Corners	Section	Twp	Range
W 1/4	13	83N	1 W



Only those copies of this page signed in red color and displaying surveyors original

Seal are to be considered certified official copies. (Iowa Admin. Code 193C-1.30)

P