

Instrument #: 2024-2650
 11/14/2024 12:42:29 PM Total Pages: 1
 ZSC SECTION CORNER CERTIFICATE
 Recording Fee: \$7.00 Transfer Tax: \$0
 Sheri L. Jones, Recorder, Jones County Iowa



PREPARED BY: MICHAEL J. WEBER, WEBER SURVEYING, LLC, 26789 46TH AVE, BERNARD, IA 52032 (563) 879-4173

UNITED STATES PUBLIC LAND SURVEY CORNER CERTIFICATE OF

LAND SURVEY MONUMENTS SITUATED IN SECTION 13, TOWNSHIP 83 NORTH, RANGE 1 WEST OF THE FIFTH PRINCIPAL MERIDIAN, JONES COUNTY, IOWA.

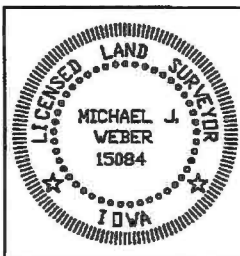
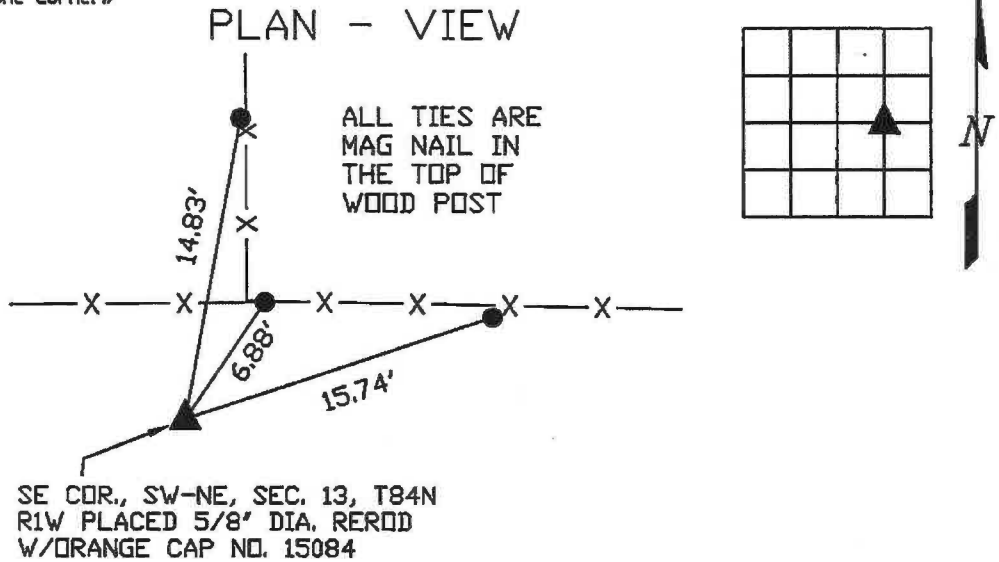
PREVIOUSLY RECORDED NONE
(book, page, document number, etc.)

(Show reason for preparing this certificate, the evidence and detailed procedures used in establishing the corner positions and monumentation found or placed.)

Monument Description and Remarks:

-SE COR., SW-NE, SEC. 13, T84N R1W PLACED 5/8" DIA. REROD W/ORANGE CAP NO. 15084. ESTABLISHED CORNER MIDWAY AND ONLINE BETWEEN THE CENTER AND EAST 1/4 COR., OF SAID SEC. 13.

(Show a minimum of three reference ties to durable physical objects, relevant monuments and physical conditions that will enable recovery of the corner.)



I HEREBY CERTIFY THAT THIS LAND SURVEYING DOCUMENT WAS PREPARED AND THE RELATED SURVEY WORK WAS PERFORMED BY ME OR UNDER MY DIRECT PERSONAL SUPERVISION AND THAT I AM A DULY LICENSED LAND SURVEYOR UNDER THE LAWS OF THE STATE OF IOWA.
Michael J. Weber November 12, 2024
 MICHAEL J. WEBER (DATE)
 LICENSE NUMBER 15084
 MY LICENSE RENEWAL DATE IS DECEMBER 31, 2025
 SHEETS COVERED BY THIS SEAL: This Sheet

List Corners to be Indexed

Corner	Sec	Twp	Range
SE COR., SW-NE,	13	83N	1W

DWG. 24025