

Number: 2025-0793  
Recorded: 4/7/2025 at 3:13:15.0 PM  
County Recording Fee: \$7.00  
Iowa E-Filing Fee: \$3.00  
Combined Fee: \$10.00  
Revenue Tax:  
Sheri L. Jones RECORDER  
Jones County, Iowa

RETURN TO & PREPARED BY: AXIOM CONSULTANTS, LLC, 300 S. CLINTON STREET UNIT 200, IOWA CITY, IA 52240 - PH# 319.519.6220

UNITED STATES PUBLIC LAND  
SURVEY CORNER CERTIFICATE

LAND SURVEY MONUMENTS SITUATED IN SECTION 36, TOWNSHIP 86 NORTH,  
RANGE 3 WEST OF THE 5TH P.M., JONES COUNTY, IOWA.

REASON FOR PREPARING CERTIFICATE:

- ☐ A. NO CERTIFICATE OF RECORD FOUND.  
☐ B. MONUMENT OR TIES FOUND DIFFER FROM RECORD.  
☒ C. MONUMENT OR TIES REPLACED.



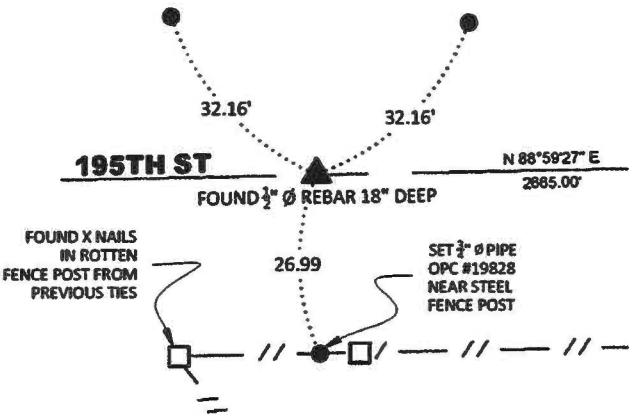
NOT TO SCALE

LEGEND



SECTION CORNER-AS LABELED  
TIE-AS LABELED  
RIGHT OF WAY  
CENTERLINE  
EXISTING FENCE

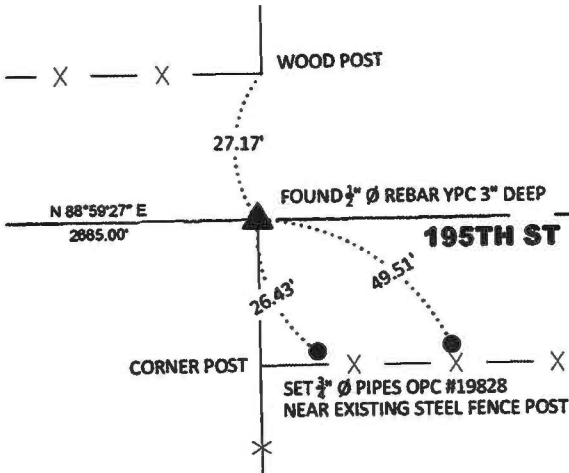
WEST CORNER  
SEC. 36-86-3



MONUMENT DESCRIPTION AND REMARKS:

CORNER CERTIFICATE 1999 1215 CALLED FOR 1/2" Ø PIN - 18" DEEP. FOUND 1/2" Ø REBAR WITH NO CAP - 18" DEEP IN CENTERLINE OF 195TH STREET. PREVIOUS TIES CALLED FOR IN THE SOUTH FENCE WERE DILAPIDATED AND THE NORTH FENCE HAS BEEN REMOVED. SET 3/4" Ø PIPES OPC #19828 FOR NEW TIES AS SHOWN.

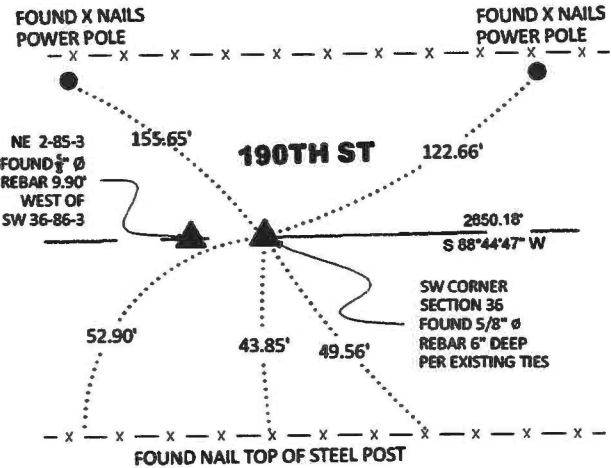
CENTER CORNER  
SEC. 36-86-3



MONUMENT DESCRIPTION AND REMARKS:

CORNER CERTIFICATE 2001 1936 CALLED FOR 1/2" Ø REBAR WITH YELLOW PLASTIC CAP #12462. FOUND 1/2" Ø REBAR WITH UNREADABLE YELLOW PLASTIC CAP. PREVIOUS TIES CALLED FOR CORNER POST TO THE SOUTH AND NORTH. BOTH POST EXIST BUT NOT IN THE BEST CONDITION. SET 3/4" Ø PIPES OPC #19828 FOR NEW TIES AS SHOWN.

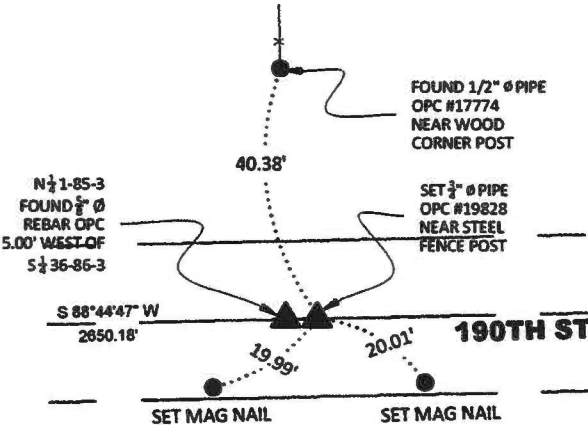
SOUTHWEST CORNER  
SEC. 36-86-3



MONUMENT DESCRIPTION AND REMARKS:

NO PREVIOUS TIES ON FILE FOR SW CORNER OF SECTION 36. EXISTING TIES FOUND PER TIES 1999 1215 FOR SE CORNER OF SECTION 35.

SOUTH CORNER  
SEC. 36-86-3



MONUMENT DESCRIPTION AND REMARKS:

CORNER CERTIFICATE 2005 4301 CALLED FOR 5/8" Ø REBAR WITH ORANGE PLASTIC CAP #14807 FLUSH WITH NEW ASPHALT. FOUND 5/8" Ø REBAR WITH UNREADABLE ORANGE PLASTIC CAP FLUSH WITH ASPHALT. PREVIOUS TIES CALLED FOR IN THE SOUTH FENCE WHICH HAS BEEN REMOVED. SET MAG NAILS AS SHOWN FOR NEW TIES.



A RUEKERT & MIELKE COMPANY

CORNERS TO BE INDEXED

CORNERS	SEC.	TWP.	RANGE
WEST	36	86N	03W
CENTER	36	86N	03W
SW	36	86N	03W
SOUTH	36	86N	03W



I hereby certify that this Land surveying document was prepared and the related survey work was performed by me or under my direct personal supervision and that I am a duly licensed Land Surveyor under the State of Iowa.  
*Bradley R. Geater* 4-7-2025  
BRADLEY R. GEATER, P.L.S., P.E. DATE  
License Number 19828.  
My license renewal date is DECEMBER 31, 2025.  
Pages or sheets covered by this seal: This Plat

2001 1936

FILED  
RECORDERS OFFICE  
JONES COUNTY IOWA

01 JUN -7 AM 11:40

MARIE KRUTZFIELD  
RECORDER 6.00 Pd

Prepared by Wm. Burger Land Surveyors

510 3rd Street West Court, Worthington, Iowa

Phone 319 - 855 2028

### UNITED STATES PUBLIC LAND SURVEY CORNER CERTIFICATE

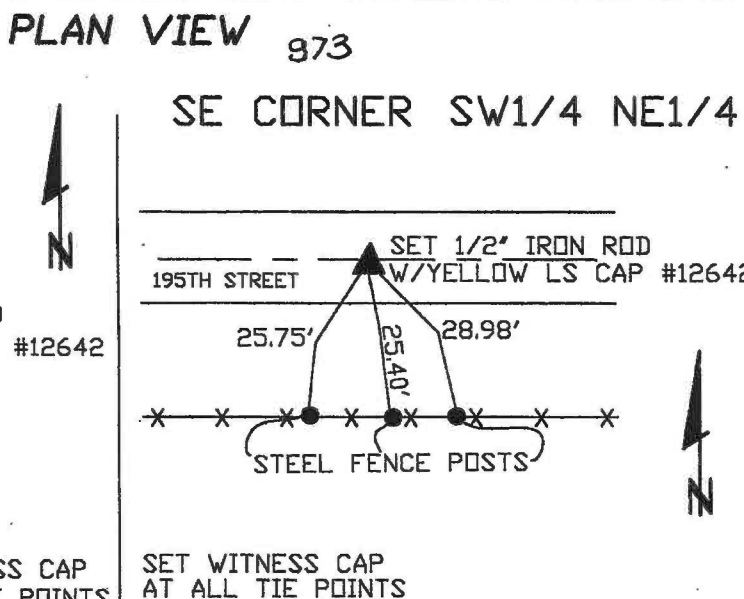
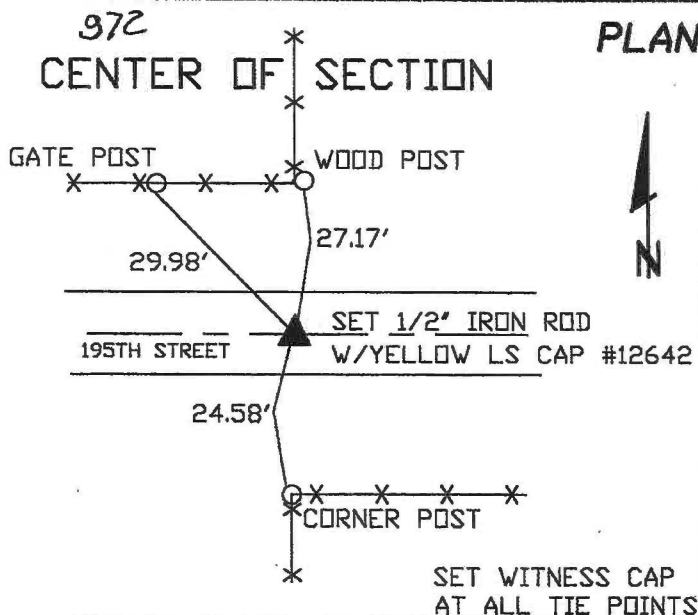
Land Survey Monuments situated in Section 36, Township 86N, Range 3W, of the Fifth Principal Meridian, Jones County, Iowa. Previously recorded in N/A in the Office of the County Recorder

Monument Description and Remarks: (No Corner Certificates found at the County Recorders Office)

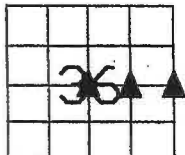
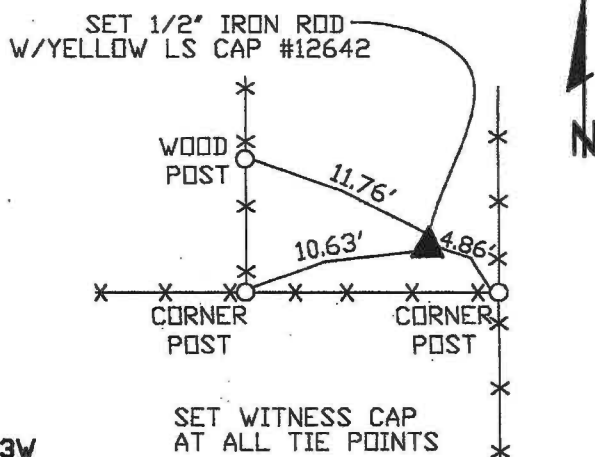
CENTER OF SECTION - SET 1/2" IRON ROD W/YELLOW LS CAP #12642 - USED INFORMATION FROM LEGAL DESCRIPTION LOCATED IN THE OFFICE OF THE JONES COUNTY RECORDER IN BOOK 300, PAGE 56

E1/4 CORNER - SET 1/2" IRON ROD W/YELLOW LS CAP #12642 - SET ON LINE AND MIDWAY BETWEEN THE SE CORNER AND THE NE CORNER

SE CORNER SW1/4 NE1/4 - SET 1/2" IRON ROD W/YELLOW LS CAP #12642 - SET ON LINE AND MIDWAY BETWEEN THE E1/4 CORNER AND THE CENTER OF SECTION



### 974 E1/4 CORNER



SEAL

SEC. 36 TWP. 86N RANGE 3W

I hereby certify that this land surveying document was prepared and related survey work was performed by me or under my direct personal supervision and that I am a duly licensed Land Surveyor under the laws of the State of Iowa.

William H. Burger 5/31/2001  
Date

License number 12642

My license renewal date is December 31, 2002

Pages or Sheets covered by this seal: Sheet 1 of 1

### CORNERS TO BE INDEXED

E1/4 CORNER	36	86N	3W
CENTER OF SECTION	36	86N	3W
SE CORNER SW1/4 NE1/4	36	86N	3W