

Number: 2025-0793
Recorded: 4/7/2025 at 3:13:15.0 PM
County Recording Fee: \$7.00
Iowa E-Filing Fee: \$3.00
Combined Fee: \$10.00
Revenue Tax:
Sheri L. Jones RECORDER
Jones County, Iowa

RETURN TO & PREPARED BY: AXIOM CONSULTANTS, LLC, 300 S. CLINTON STREET UNIT 200, IOWA CITY, IA 52240 - PH# 319.519.6220

UNITED STATES PUBLIC LAND
SURVEY CORNER CERTIFICATE

LAND SURVEY MONUMENTS SITUATED IN SECTION 36, TOWNSHIP 86 NORTH,
RANGE 3 WEST OF THE 5TH P.M., JONES COUNTY, IOWA.

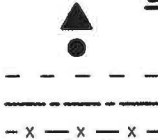
REASON FOR PREPARING CERTIFICATE:

- ☐ A. NO CERTIFICATE OF RECORD FOUND.
☐ B. MONUMENT OR TIES FOUND DIFFER FROM RECORD.
☒ C. MONUMENT OR TIES REPLACED.



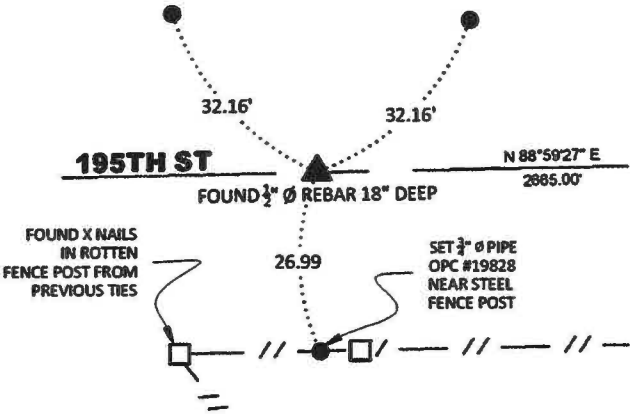
NOT TO SCALE

LEGEND



SECTION CORNER-AS LABELED
TIE-AS LABELED
RIGHT OF WAY
CENTERLINE
EXISTING FENCE

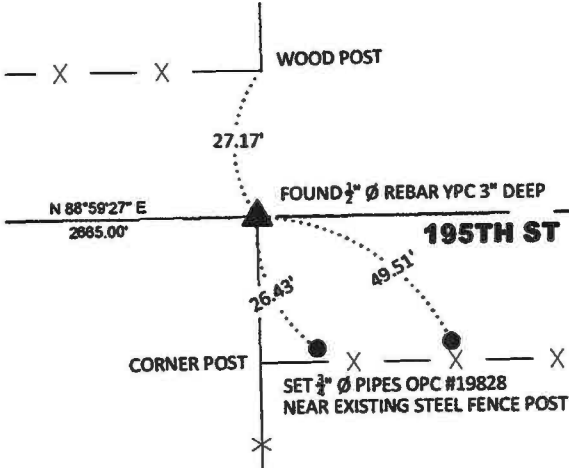
WEST CORNER
SEC. 36-86-3



MONUMENT DESCRIPTION AND REMARKS:

CORNER CERTIFICATE 1999 1215 CALLED FOR 1/2" Ø PIN - 18" DEEP. FOUND 1/2" Ø REBAR WITH NO CAP - 18" DEEP IN CENTERLINE OF 195TH STREET. PREVIOUS TIES CALLED FOR IN THE SOUTH FENCE WERE DILAPIDATED AND THE NORTH FENCE HAS BEEN REMOVED. SET 3/4" Ø PIPES OPC #19828 FOR NEW TIES AS SHOWN.

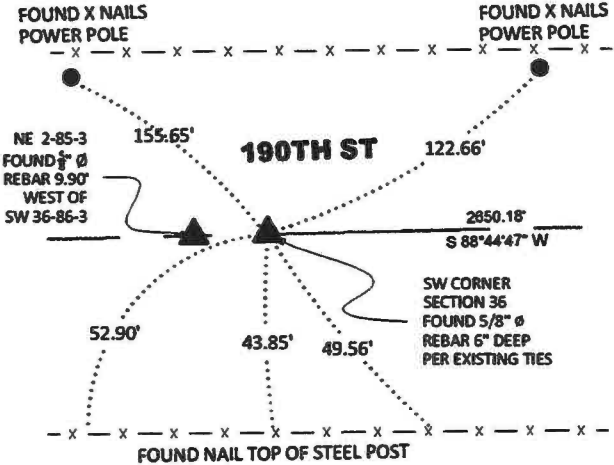
CENTER CORNER
SEC. 36-86-3



MONUMENT DESCRIPTION AND REMARKS:

CORNER CERTIFICATE 2001 1936 CALLED FOR 1/2" Ø REBAR WITH YELLOW PLASTIC CAP #12462. FOUND 1/2" Ø REBAR WITH UNREADABLE YELLOW PLASTIC CAP. PREVIOUS TIES CALLED FOR CORNER POST TO THE SOUTH AND NORTH. BOTH POST EXIST BUT NOT IN THE BEST CONDITION. SET 3/4" Ø PIPES OPC #19828 FOR NEW TIES AS SHOWN.

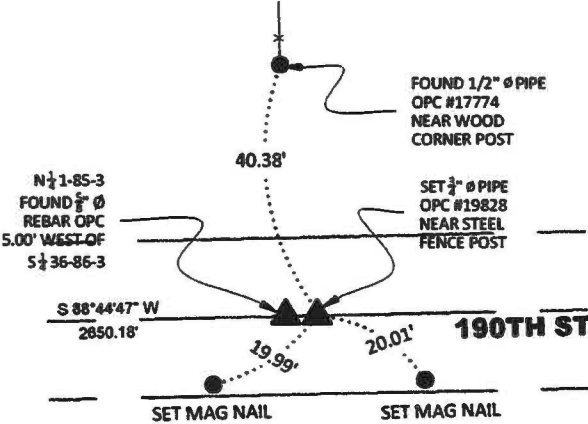
SOUTHWEST CORNER
SEC. 36-86-3



MONUMENT DESCRIPTION AND REMARKS:

NO PREVIOUS TIES ON FILE FOR SW CORNER OF SECTION 36. EXISTING TIES FOUND PER TIES 1999 1215 FOR SE CORNER OF SECTION 35.

SOUTH CORNER
SEC. 36-86-3



MONUMENT DESCRIPTION AND REMARKS:

CORNER CERTIFICATE 2005 4301 CALLED FOR 5/8" Ø REBAR WITH ORANGE PLASTIC CAP #14807 FLUSH WITH NEW ASPHALT. FOUND 5/8" Ø REBAR WITH UNREADABLE ORANGE PLASTIC CAP FLUSH WITH ASPHALT. PREVIOUS TIES CALLED FOR IN THE SOUTH FENCE WHICH HAS BEEN REMOVED. SET MAG NAILS AS SHOWN FOR NEW TIES.



CORNERS TO BE INDEXED

CORNERS	SEC.	TWP.	RANGE
WEST	36	86N	03W
CENTER	36	86N	03W
SW	36	86N	03W
SOUTH	36	86N	03W



I hereby certify that this Land surveying document was prepared and the related survey work was performed by me or under my direct personal supervision and that I am a duly licensed Land Surveyor under the State of Iowa.
Bradley R. Geater 4-7-2025
BRADLEY R. GEATER, P.L.S., P.E. DATE
License Number 19828.
My license renewal date is DECEMBER 31, 2025.
Pages or sheets covered by this seal: This Plat

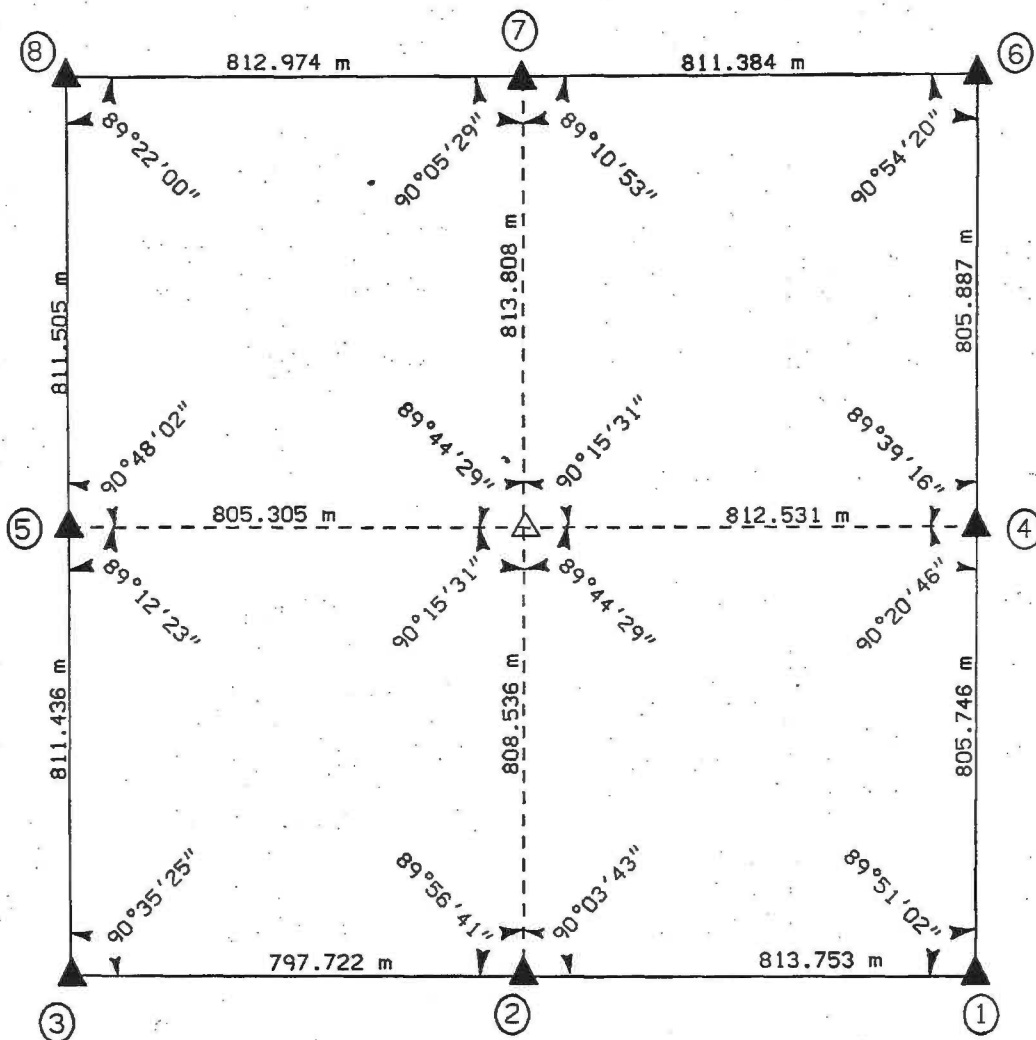
EARTH TECH 501 SYCAMORE STREET WATERLOO, IOWA 50703 1-319-232-6531

UNITED STATES PUBLIC SECTION CORNER CERTIFICATION
AND LAND CORNER SURVEY
SECTION 35 T-86N R-3W

MADE FOR
IOWA DEPARTMENT OF TRANSPORTATION FOR THE PURPOSE OF
RIGHT OF WAY DESCRIPTIONS ON PRIMARY ROAD No. U.S. 151

MADE BY
MICHAEL R. FAGLE R.L.S. No. 8505
JONES COUNTY, IOWA NHS-151-3(84)--19-57
APRIL 1998 THRU OCTOBER 1998

ALL DISTANCES WERE CAREFULLY MEASURED AND MAY NOT AGREE WITH ROAD SURVEY STATIONING



EARTH TECH

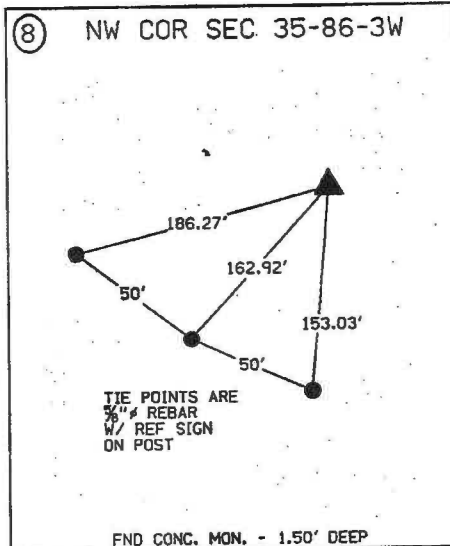
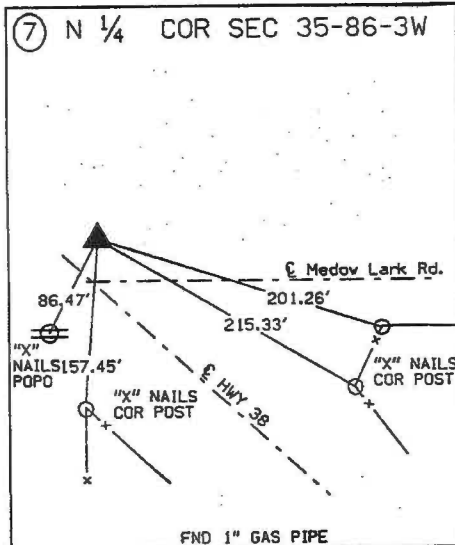
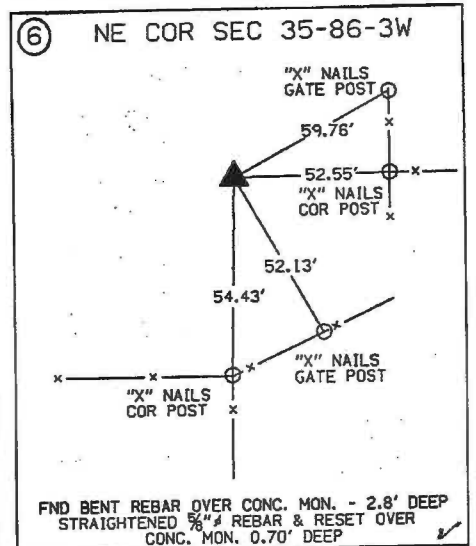
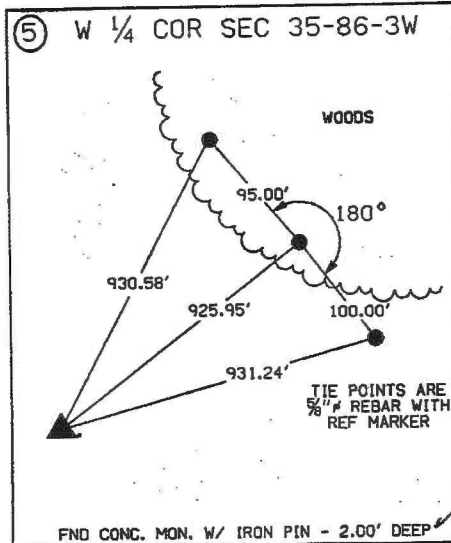
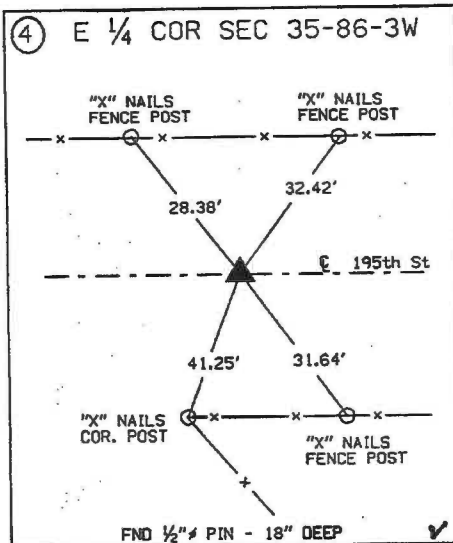
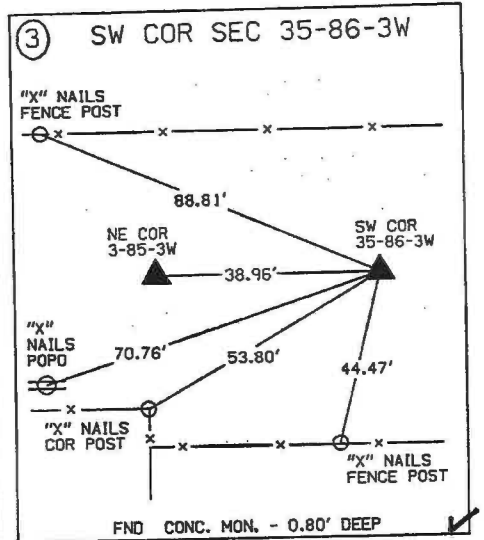
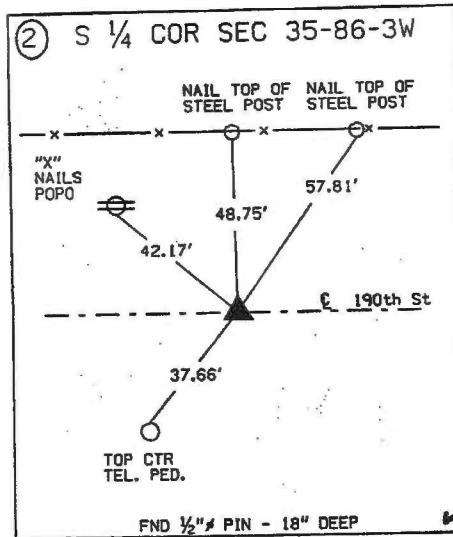
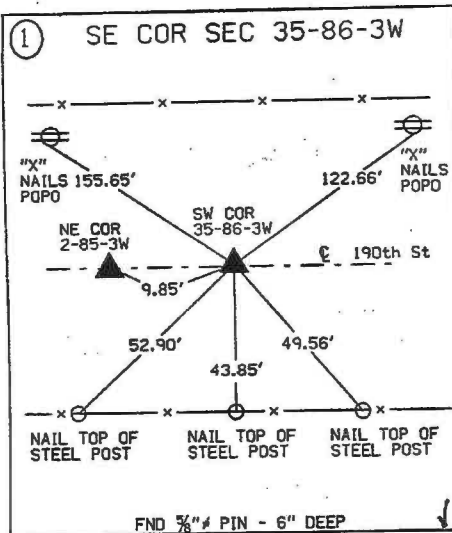
863 35e-033199
863 35e-033199
863 35e-033199
863 35w-033199
863 35y-033199

METRIC

	I hereby certify that this Land Surveying document was prepared by me or under my direct personal supervision and that I am a duly Licensed Land Surveyor under the laws of the State of Iowa.
	<i>Michael R. Fagle</i> 3-31-99 MICHAEL R. FAGLE Date
	License number 8505
	My license renewal date is December 31, 2000
	Pages or sheets covered by this seal: <u>ONE</u>

✓

UNITED STATES PUBLIC SECTION CORNER CERTIFICATION AND LAND CORNER SURVEY SECTION 35 T-86N R-3W



ALL TIES ARE ENGLISH UNLESS OTHERWISE NOTED