

Instrument #: 2025-0756
04/02/2025 01:59:41 PM Total Pages: 1
ZSC SECTION CORNER CERTIFICATE
Recording Fee: \$7.00 Transfer Tax: \$0
Sheri L. Jones, Recorder, Jones County Iowa



PREPARED BY: MICHAEL J. WEBER, WEBER SURVEYING, LLC, 26789 46TH AVE, BERNARD, IA 52032 (563) 879-4173

UNITED STATES PUBLIC LAND SURVEY CORNER CERTIFICATE OF
LAND SURVEY MONUMENTS SITUATED IN SECTION 12, TOWNSHIP 84 NORTH, RANGE 3 WEST
OF THE FIFTH PRINCIPAL MERIDIAN, JONES COUNTY, IOWA.
PREVIOUSLY RECORDED NONE

(book, page, document number, etc)

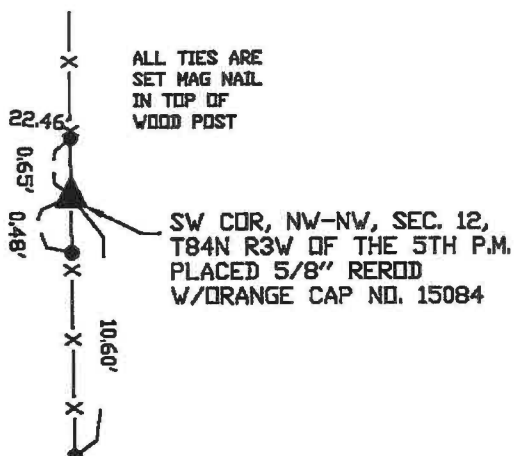
(Show reason for preparing this certificate, the evidence and detailed procedures used in establishing the corner positions and monumentation found or placed.)

Monument Description and Remarks:

-SW COR, NW-NW, SEC. 12, T84N R3W OF THE 5TH P.M. PLACED 5/8" REROD W/ORANGE CAP NO. 15084. ESTABLISHED CORNER MIDWAY BETWEEN THE NW CORNER AND THE WEST 1/4 COR. INLINE WITH THE OCCUPATION FENCE RUNNING NORTH & SOUTH
-SE COR, NE-NW, SEC. 12, T84N R3W OF THE 5TH P.M. PLACED 5/8" REROD W/ORANGE CAP NO. 15084. ESTABLISHED CORNER ONLINE BETWEEN THE NORTH 1/4 CORNER AND THE SOUTH 1/4 COR. AT THE INTERSECTION OF A OCCUPATION FENCELINE ALONG THE NORTH LINE OF THE WEST 1/2 OF THE SE-NW OF SAID SEC. 12

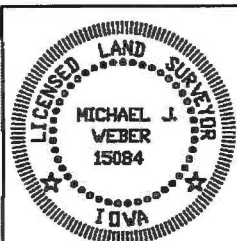
(Show a minimum of three reference ties to durable physical objects, relevant monuments and physical conditions that will enable recovery of the corner.)

PLAN - VIEW



ALL TIES ARE FOUND 5/8" REROD IN CENTERLINE OF COUNTY ROAD E-29 CONCRETE PAVEMENT

SE COR, NE-NW, SEC. 12, T84N R3W OF THE 5TH P.M. PLACED 5/8" REROD W/ORANGE CAP NO. 15084



I HEREBY CERTIFY THAT THIS LAND SURVEYING DOCUMENT WAS PREPARED AND THE RELATED SURVEY WORK WAS PERFORMED BY ME OR UNDER MY DIRECT PERSONAL SUPERVISION AND THAT I AM A DULY LICENSED LAND SURVEYOR UNDER THE LAWS OF THE STATE OF IOWA.
Michael J. Weber March 28, 2025
MICHAEL J. WEBER (DATE)
LICENSE NUMBER 15084
MY LICENSE RENEWAL DATE IS DECEMBER 31, 2025
SHEETS COVERED BY THIS SEAL 4th Sheet

List Corners to be Indexed
Corner Sec Twp Range
SW COR., NW-NW 12-84N-3W
SE COR., NE-NW 12-84N-3W
DWG. 25025