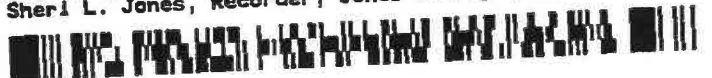


Instrument #: 2024-2977
 12/18/2024 03:59:16 PM Total Pages: 1
 ZSC SECTION CORNER CERTIFICATE
 Recording Fee: \$7.00 Transfer Tax: \$0
 Sheri L. Jones, Recorder, Jones County Iowa



PREPARED BY: MICHAEL J. WEBER, WEBER SURVEYING, LLC, 26789 46TH AVE, BERNARD, IA 52032 (563) 879-4173

UNITED STATES PUBLIC LAND SURVEY CORNER CERTIFICATE OF

LAND SURVEY MONUMENTS SITUATED IN SECTION 10, TOWNSHIP 83 NORTH, RANGE 2 WEST OF THE FIFTH PRINCIPAL MERIDIAN, JONES COUNTY, IOWA.

PREVIOUSLY RECORDED INSTR. NO. 2009 2903

(Book, page, document number, etc.)

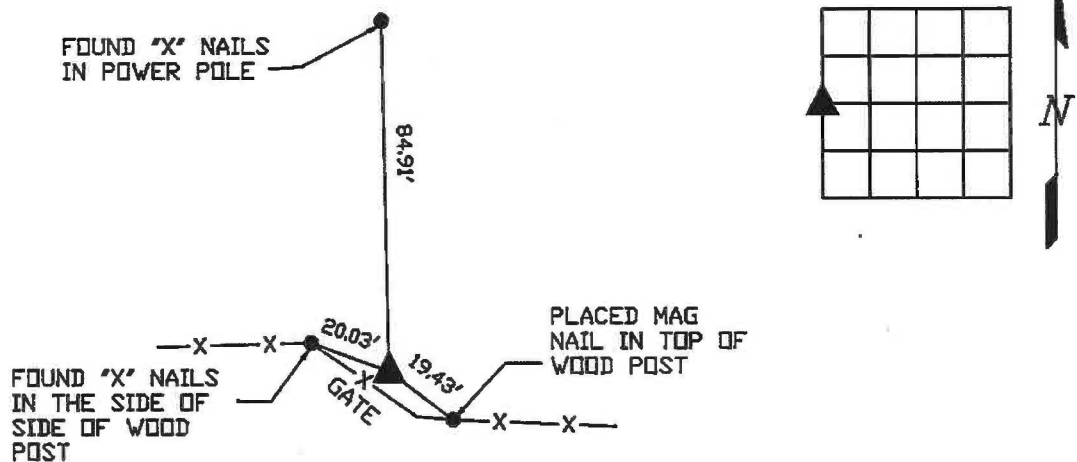
(Show reason for preparing this certificate, the evidence and detailed procedures used in establishing the corner positions and monumentation found or placed.)

Monument Description and Remarks:

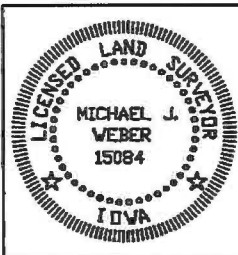
-WEST 1/4 COR., SEC. 10, T83N R2W OF THE 5TH P.M. FOUND 1/2" DIA. REROD PREVIOUSLY RECORDED IN SEC. COR. CERT. INSTR. NO. 2009 2903. RE-ESTABLISHED TIES.

(Show a minimum of three reference ties to durable physical objects, relevant monuments and physical conditions that will enable recovery of the corner.)

PLAN - VIEW



WEST 1/4 COR., SEC. 10, T83N R2W OF THE 5TH P.M. FOUND 1/2" DIA. REROD PER SEC. COR. CERT. INSTR. NO. 2009 2903



I HEREBY CERTIFY THAT THIS LAND SURVEYING DOCUMENT WAS PREPARED AND THE RELATED SURVEY WORK WAS PERFORMED BY ME OR UNDER MY DIRECT PERSONAL SUPERVISION AND THAT I AM A DULY LICENSED LAND SURVEYOR UNDER THE LAWS OF THE STATE OF IOWA.
Michael J. Weber December 17, 2024
 MICHAEL J. WEBER (DATE)
 LICENSE NUMBER 15084
 MY LICENSE RENEWAL DATE IS DECEMBER 31, 2025
 SHEETS COVERED BY THIS SEAL: Sheet 1

List Corners to be Indexed
 Corner Sec Twp Range
 WEST 1/4 COR., 10-83N-2W
 DWG. 24116

Marie Krutzfield, Recorder
 Jones County, Iowa

Prepared by: Terry L. Koelker Address: 1212 Locust St. Dubuque, IA Telephone: 556-4389

SLSI 9-94

UNITED STATES PUBLIC LAND SURVEY CORNER CERTIFICATE

OF

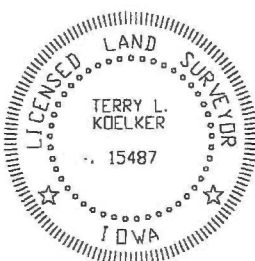
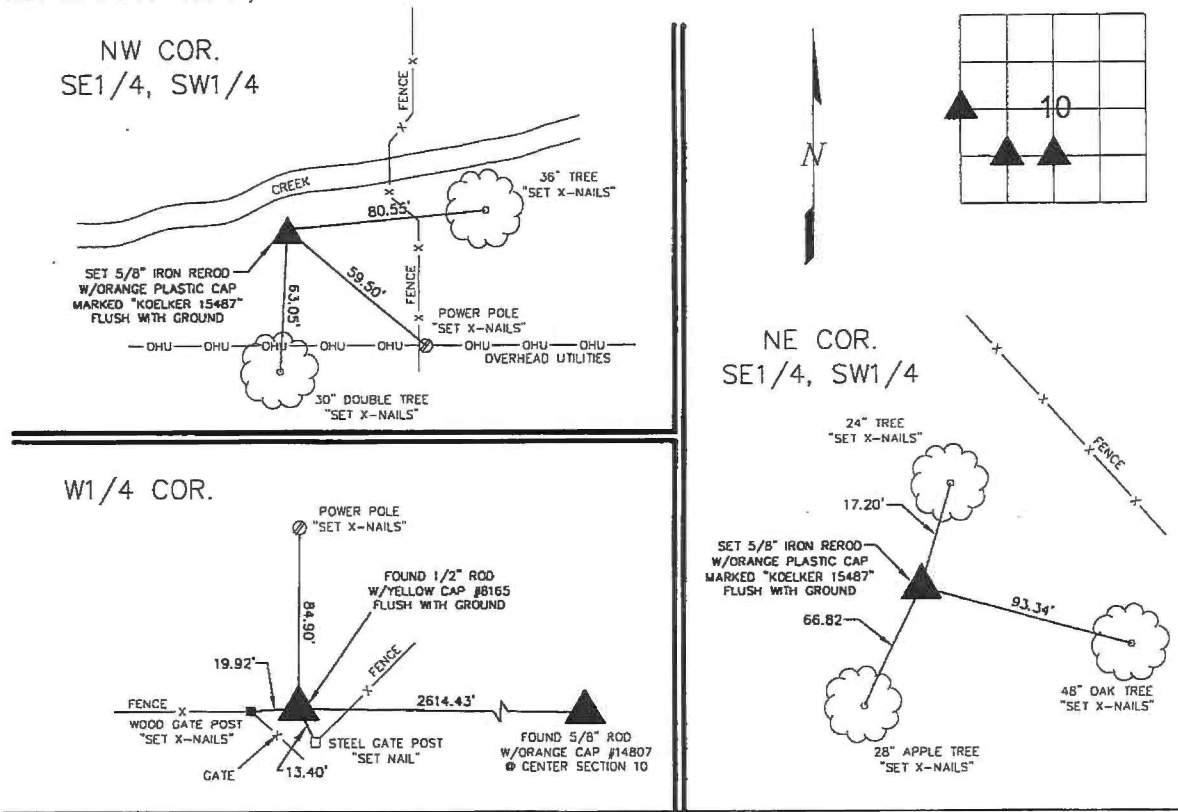
Land Survey Monuments situated in Section 10, Township 83N, Range 2W, of the Fifth Principal Meridian, JONES County, Iowa.
 Previously recorded in N/A in County Recorder's Office.
(book, page, document number, etc.)

(Show reason for preparing this certificate, the evidence and detailed procedures used in establishing the corner positions and monumentation found or placed.)

Monument Description and Remarks: SET 5/8" IRON REROD W/ORANGE PLASTIC CAP MARKED "KOELKER 15487" @ THE NW CORNER OF THE SE1/4, SW1/4, SECTION 10. CORNER ESTABLISHED BY SPLITTING THE SW1/4. SET FLUSH WITH GROUND.
 SET 5/8" IRON REROD W/ORANGE PLASTIC CAP MARKED "KOELKER 15487" @ THE NE CORNER OF THE SE1/4, SW1/4, SECTION 10. CORNER ESTABLISHED BY USING THE MIDPOINT BETWEEN THE CENTER AND THE S1/4 CORNER. SET FLUSH WITH GROUND.
 FOUND 1/2" ROD W/YELLOW CAP #8165 @ THE W1/4 CORNER. FLUSH WITH GROUND

PLAN - VIEW

(Show a minimum of three reference ties to durable physical objects, relevant monuments and physical conditions that will enable recovery of the corner.)



I HEREBY CERTIFY THAT THIS LAND SURVEYING DOCUMENT WAS PREPARED AND THE RELATED SURVEY WORK WAS PERFORMED BY ME OR UNDER MY DIRECT PERSONAL SUPERVISION AND THAT I AM A DULY LICENSED LAND SURVEYOR UNDER THE LAWS OF THE STATE OF IOWA.
 Terry L. Koelker 8/18/09
 TERRY L. KOELKER (DATE)
 LICENSE NUMBER 15487
 MY LICENSE RENEWAL DATE IS DECEMBER 31, 2009

List Corners	Section	Twp	Range
NW COR. SE1/4, SW1/4	10	83N	2W
NE COR. SE1/4, SW1/4	10	83N	2W
W1/4 COR.	10	83N	2W

BUESING & ASSOCIATES INC. ENGINEERS AND SURVEYORS 1212 LOCUST ST, DUBUQUE, IA (563) 556-4389	MONUMENT RECORD	
	COUNTY: <u>JONES</u> TOWNSHIP: <u>HALE</u>	DATE PLOTTED: 8-11-09 DATE REVISED:

SECTION CORNER CERTIFICATE

OF
 LAND SURVEY MONUMENTS SITUATED IN SECTION 10, TOWNSHIP 83 NORTH,
 RANGE 2 WEST, OF THE FIFTH PRINCIPAL MERIDIAN, JONES, COUNTY, IOWA.

PREVIOUSLY RECORDED IN BOOK _____ AT PAGE _____

FOR RECORDER'S USE

REASON FOR PREPARING CERTIFICATE:

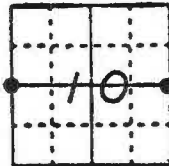
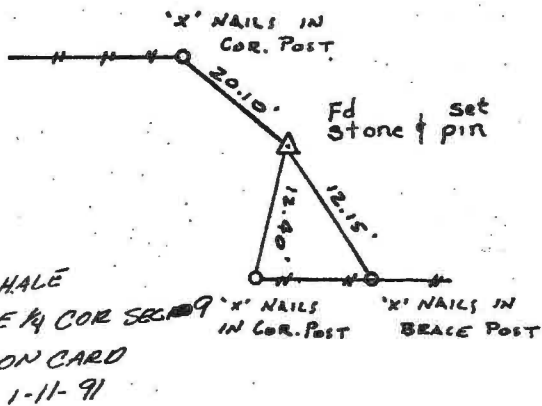
- A) THERE IS NO CERTIFICATE FOR THE CORNER ON FILE WITH THE RECORDER OF THE COUNTY IN WHICH THE CORNER IS LOCATED.
- B) CORNER POSITION DIFFERS FROM THAT SHOWN IN THE PUBLIC RECORDS OF THE COUNTY IN WHICH THE CORNER IS LOCATED.
- C) THE CORNER MONUMENT HAS BEEN REPLACED OR MODIFIED.
- D) THE REFERENCE TIES REFERRED TO IN AN EXISTING PUBLIC RECORD ARE INCORRECT.

MONUMENT DESCRIPTION AND REMARKS:

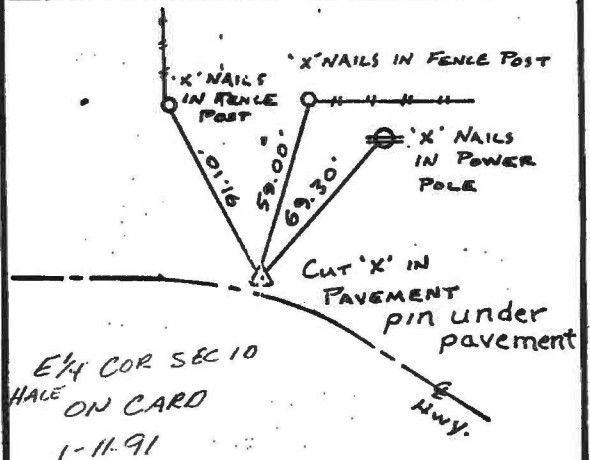
W 1/4 CORNER SECTION 10-83-2 FOUND SANDSTONE 2" DEEP SET 1/2" 6 PIN WITH U.S. CAP # 8165 ON SOUTH EDGE OF STONE 4" DEEP
 E 1/4 CORNER SECTION 10-83-2 FOUND CUT 'X' IN PAVEMENT = P.I.
 Pin under pavement, used ties Jones Co. Engr.

RECOVERY TIE DRAWING

W 1/4 COR. SEC. 10-83-2



E 1/4 COR. SEC. 10-83-2



I, GLEN D. MEISNER, CERTIFY THAT THE CORNER LOCATION(S) SHOWN ON THIS RECORD WERE DETERMINED BY ME OR UNDER MY DIRECTION AND CONTROL AND THAT THIS U.S. PUBLIC LAND SURVEY MONUMENT RECORD IS CORRECT AND COMPLETE TO THE BEST OF MY KNOWLEDGE AND BELIEF.

Glen D. Meisner 1-3-91
 GLEN D. MEISNER L.S. NO 8165 DATE



SYMBOL ▲ CORNER ○ 1/2" 6 PIN SET --- CENTERLINE --- EXISTING FENCE LINE --- R.R. LINE	DIST 21.8 POWER 25.0	U.S. PUBLIC LAND SURVEY RECORD	HALL AND HALL ENGINEERS, INC. 226 29TH STREET DRIVE S.E. CEDAR RAPIDS, IOWA 52403 319-362-9548
	R.W. B. GDM APP DATE 12-5-90 SCALE NONE	SHEET NO. 439B	

THIS IS NOT A CERTIFICATION

JONES COUNTY ENGINEER'S OFFICE, 19501 HWY. 64, ANAMOSA, IOWA, 52205 (319)462-3785

UNITED STATES PUBLIC LAND SURVEY CORNER CERTIFICATE

LAND SURVEY MONUMENTS SITUATED IN SECTION 9, TOWNSHIP 83
NORTH, RANGE 2 WEST OF THE 5TH P.M., JONES COUNTY, IOWA

CORNERS TO BE INDEXED

CORNER E-QUARTER	SECTION 9	TOWNSHIP 83N	RANGE 2W
---------------------	--------------	-----------------	-------------

OFFICE FILE NO. _____
83209e_122303.jpg

INFORMATION PROVIDED BY GLEN MEISNER LS 8165 1-03-91

PREVIOUSLY RECORDED IN BOOK _____, PAGE _____
MONUMENT DESCRIPTION AND HOW ESTABLISHED INFORMATION AS SHOWN PROVIDED BY GLEN MEISNER LS 8165, FD. STONE AND SET PIN, EAST QUARTER COR. SECTION 9, TOWNSHIP 83 NORTH, RANGE 2 WEST OF THE 5TH PRINCIPAL MERIDIAN, JONES COUNTY, IOWA.

CORNERS TO BE INDEXED

CORNER NE-CORNER	SECTION 9	TOWNSHIP 83N	RANGE 2W
---------------------	--------------	-----------------	-------------

OFFICE FILE NO. _____
83209e_122903.jpg

INFORMATION AS SHOWN PER JONES COUNTY INDEX CARDS.

REF: JONES COUNTY CORNER STONE BOOK 19, PAGE 70, JONES COUNTY SURVEY CREW
(NO DATE INDICATED)

PREVIOUSLY RECORDED IN BOOK _____, PAGE _____
MONUMENT DESCRIPTION AND HOW ESTABLISHED INDEX CARD PER JONES COUNTY SURVEY CREW. NO DATE INDICATED. TYPE OF MONUMENT NOT INDICATED. NORTHEAST CORNER OF SECTION 9, TOWNSHIP 83 NORTH, RANGE 2 WEST OF THE 5TH PRINCIPAL MERIDIAN, JONES COUNTY, IOWA.

CORNERS TO BE INDEXED

CORNER	SECTION	TOWNSHIP	RANGE
--------	---------	----------	-------

OFFICE FILE NO. _____

PREVIOUSLY RECORDED IN BOOK _____, PAGE _____
MONUMENT DESCRIPTION AND HOW ESTABLISHED _____

CORNERS TO BE INDEXED

CORNER	SECTION	TOWNSHIP	RANGE
--------	---------	----------	-------

OFFICE FILE NO. _____

PREVIOUSLY RECORDED IN BOOK _____, PAGE _____
MONUMENT DESCRIPTION AND HOW ESTABLISHED _____

~~I hereby declare that this plat, survey or report was made by me or under my direct personal supervision and that I am a duly registered Land Surveyor under the laws of the State of Iowa.~~

Signed: _____

SEAL

JONES COUNTY ENGINEER'S OFFICE

19501 HWY. 64,
ANAMOSA, IOWA,
52205 (319)462-3785