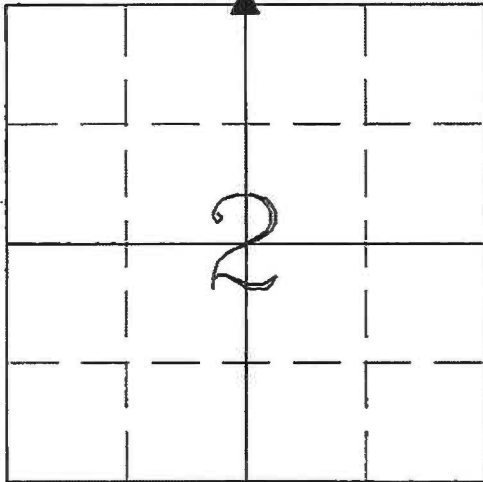


Instrument #: 2024-0955
 05/02/2024 09:25:38 AM Total Pages: 1
 ZSC SECTION CORNER CERTIFICATE
 Recording Fee: \$7.00 Transfer Tax: \$0
 Sheri L. Jones, Recorder, Jones County Iowa



PREPARED BY GREGG E. SAMPSON P.L.S. HALL & HALL ENGINEERS, INC. 1860 BOYSON RD. HIAWATHA, IA 52233 (319) 362-9548

SECTION CORNER INDEX

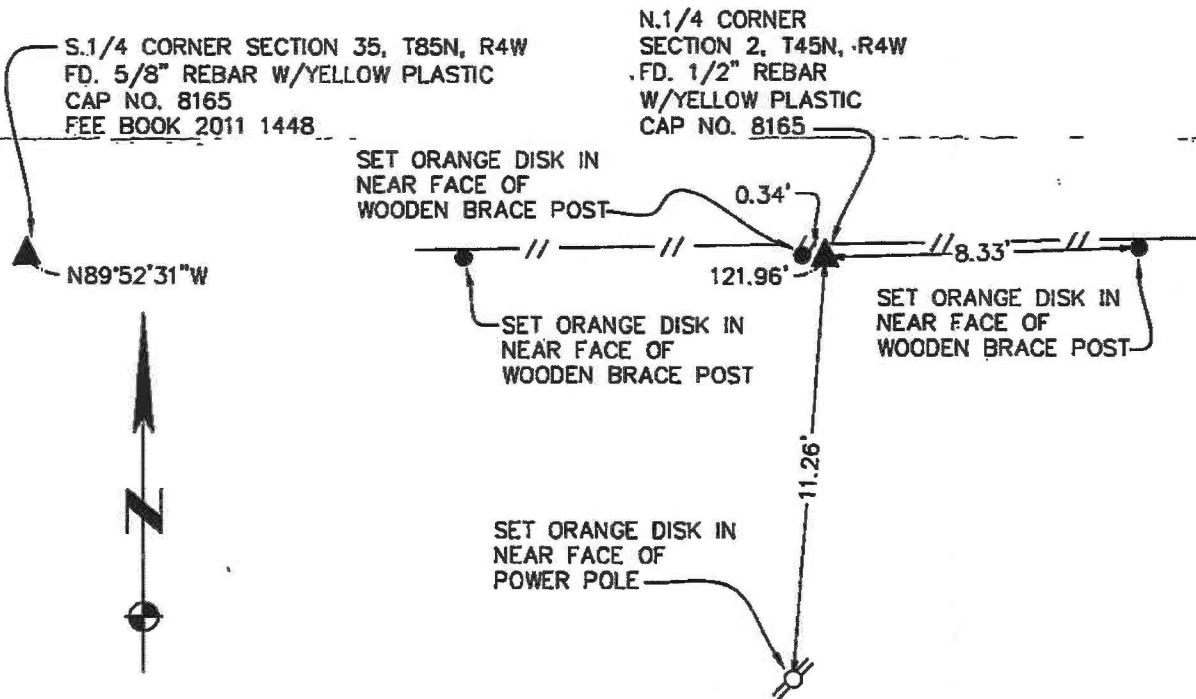


U.S. PUBLIC LAND SURVEY CORNER CERTIFICATE
 LAND SURVEY MONUMENTS SITUATED IN SECTION 2,
 TOWNSHIP 84 NORTH, RANGE 4 WEST, OF THE FIFTH
 PRINCIPAL MERIDIAN, JONES COUNTY, IOWA.

REASON FOR PREPARING CERTIFICATE:

- A) THERE IS NO CERTIFICATE FOR THE CORNER ON FILE WITH THE RECORDER OF THE COUNTY IN WHICH THE CORNER IS LOCATED.
- B) CORNER POSITION DIFFERS FROM THAT SHOWN IN THE PUBLIC RECORDS OF THE COUNTY IN WHICH THE CORNER IS LOCATED.
- C) THE CORNER MONUMENT HAS BEEN REPLACED OR MODIFIED.
- D) THE REFERENCE TIES REFERRED TO IN AN EXISTING PUBLIC RECORD ARE INCORRECT OR MISSING.

N.1/4 CORNER
 SECTION 2, T84N, R4W



NARRATIVE:

FOUND 1/2" REBAR W/YELLOW PLASTIC CAP, FLUSH W/GROUND, SET BY PLS #B165. COULD NOT FIND RECORDED COPY OF CERTIFICATE.



I hereby certify that this land surveying document was prepared and the related survey work was performed by me or under my direct personal supervision and that I am a duly licensed Land Surveyor under the laws of the State of Iowa.

Signed: *[Signature]* Date: 4/30/2024
 GREGG E. SAMPSON, P.L.S. Iowa License No. 14809
 My license renewal date is December 31, 2024

ENTIRE SUBMISSION IS COVERED BY THIS SEAL UNLESS SPECIFIED BELOW:

SURVEY LEGEND

- // — WOVEN-WIRE FENCE
- FD. MONUMENT AS NOTED
- ▲ FD. SECTION CORNER MONUMENT AS NOTED

Drawn by:BJV

Checked by:GES

Approved by:

Field Book No:OT 113

Sheet:1 OF 1

Date:4/30/2024

10806-22-1

☐☐
 Jones County Marie Krutzfield Recorder
 Fee Book 2011 1448
 06/02/2011 @0159PM # Pages 1
 ZSC SEC COR CERT
 Total Fees: \$0.00

PREPARED BY
 CLARENCE J. WALTON, JONES COUNTY ENGINEER'S OFFICE, 19501 HWY. 64, ANAMOSA, IOWA, 52205 (319) 462-3785

UNITED STATES PUBLIC LAND SURVEY CORNER CERTIFICATE

LAND SURVEY MONUMENTS SITUATED IN SECTION 35, TOWNSHIP 85 NORTH,
 RANGE 4 WEST OF THE 5TH PRINCIPAL MERIDIAN, JONES COUNTY, IOWA.

STATE PLANE COORDINATE
 NAD 83 IOWA NORTH
 N 3515354.12
 E 5524095.31

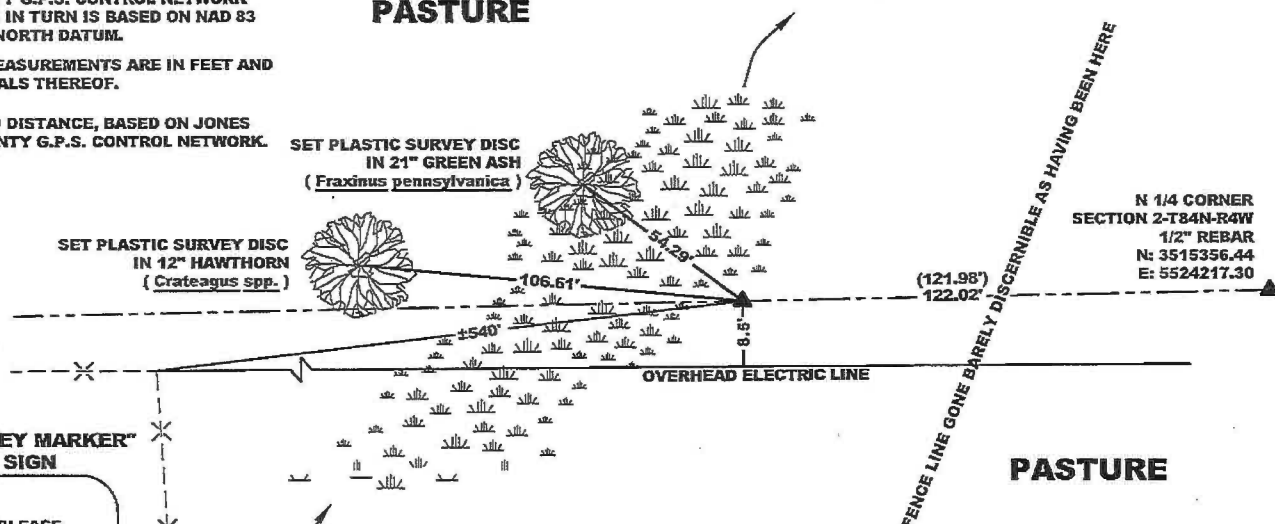
CORNER SECTION TOWNSHIP RANGE
 S 1/4 CORNER 35 T85N R4W



NOTES:

- 1) THE STATE PLANE COORDINATES AS SHOWN ARE FOR CONVENIENCE ONLY. THE TIES AS SHOWN SHOULD BE USED TO REPLACE THE CORNER, IF DESTROYED.
- 2) COORDINATES AS SHOWN ARE GRID COORDINATES AND BASED ON JONES COUNTY G.P.S. CONTROL NETWORK WHICH IN TURN IS BASED ON NAD 83 IOWA NORTH DATUM.
- 3) ALL MEASUREMENTS ARE IN FEET AND DECIMALS THEREOF.
- 4) * GRID DISTANCE, BASED ON JONES COUNTY G.P.S. CONTROL NETWORK.

PASTURE



"SURVEY MARKER" SIGN

PLEASE PROTECT NEARBY SURVEY MARKER

IF LOCATION OF THIS MARK IS ENDANGERED PLEASE CONTACT JONES COUNTY ENGINEER'S OFFICE 319-462-3785



- LEGEND
- OPC ORANGE PLASTIC CAP
 - YPC YELLOW PLASTIC CAP
 - () RECORDED AS

PREVIOUSLY RECORDED IN RECORDER'S DOCUMENT 2004 0127
 MONUMENT DESCRIPTION AND HOW ESTABLISHED FOUND 5/8" REBAR W/ YELLOW PLASTIC CAP #8165 3" BELOW EXISTING GROUND SURFACE. SET STEEL FENCE POST WITH "SURVEY MARKER" SIGN 0.25' NORTH OF SAID 5/8" REBAR.

FIELD BOOK 333, PAGE 78. DATE OF SURVEY: 4/13/11



I hereby certify that this land surveying document and the related survey work was performed by me or under my direct personal supervision and that I am a duly registered Land Surveyor under the laws of the State of Iowa.

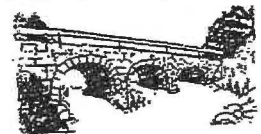
Signed: *Clarence J. Walton* 6/3/11
 Clarence J. Walton, L.S.
 My Registration Renewal Date is December 31, 2011
 Iowa License Number 11310
 Pages or sheets covered by this seal: 1 of 1.

- A. THERE IS NO CERTIFICATE FOR THE CORNER ON FILE WITH THE RECORDER OF THE COUNTY IN WHICH THE CORNER IS LOCATED.
- B. THE CORNER MONUMENT HAS BEEN REPLACED OR MODIFIED.
- C. THE SURVEYOR IN RESPONSIBLE CHARGE OF THE LAND SURVEYING ACCEPTS A CORNER POSITION THAT DIFFERS FROM THAT SHOWN IN THE PUBLIC RECORDS OF THE COUNTY IN WHICH THE CORNER IS LOCATED.
- D. THE REFERENCE TIES REFERRED TO IN AN EXISTING PUBLIC RECORD NO LONGER EXIST.
- E. EXISTING CORNER TIES UPDATED.

CORNERS TO BE INDEXED

CORNER	SECTION	TOWNSHIP	RANGE
S 1/4 CORNER	35	85N	4W

JONES COUNTY ENGINEER'S OFFICE



19501 HWY. 64, ANAMOSA, IOWA 52205
 (319) 462-3785

FOR RECORDER USE ONLY

2004 0127
FILED
RECORDERS OFFICE
JONES COUNTY IOWA

04 JAN 13 AM 11:17

MARIE KRUTZFIELD
RECORDER 11.00 pd

PREPARED BY: MMS CONSULTANTS INC. - 1917 S. GILBERT STREET - IOWA CITY, IOWA, 52240 - (319)351-8282

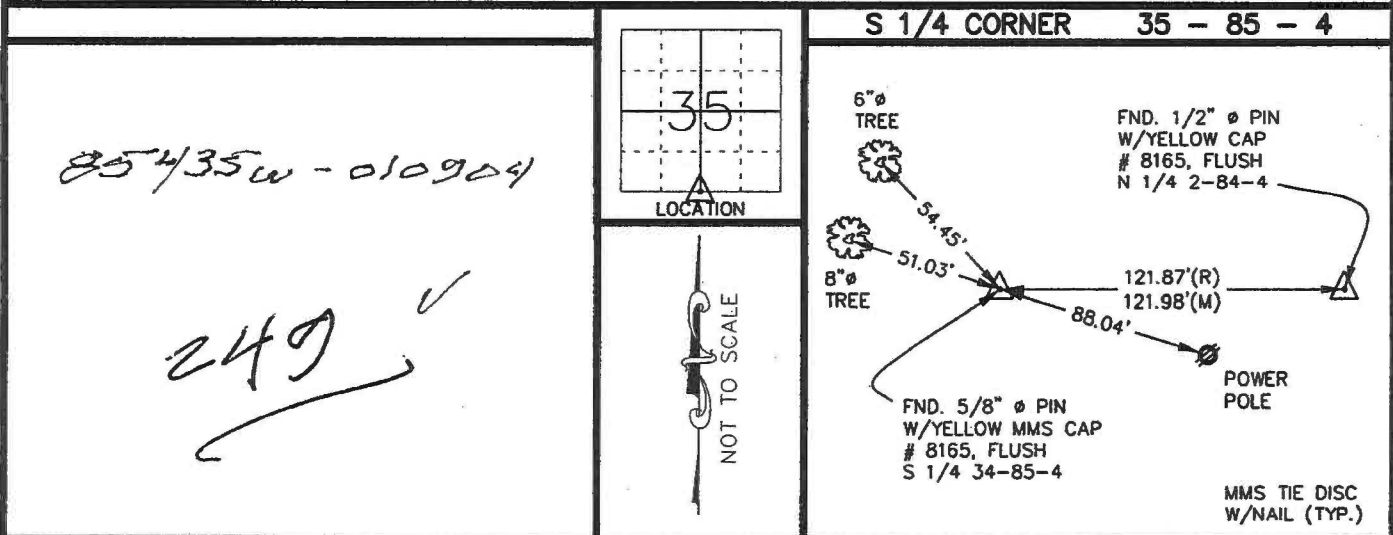
U.S. PUBLIC LAND SURVEY CORNER CERTIFICATE

FOR LAND SURVEY MONUMENTS SITUATED IN SECTION 35, TOWNSHIP 85 NORTH, RANGE 4 WEST, OF THE FIFTH PRINCIPAL MERIDIAN, JONES COUNTY, IOWA

REASON FOR PREPARING CERTIFICATE:

- A) THERE IS NO CERTIFICATE FOR THE CORNER ON FILE WITH THE RECORDER. INSTRUMENT NO. 9899 1023
- B) CORNER FOUND DIFFERS FROM PREVIOUSLY RECORDED CERTIFICATE RECORDED IN BOOK _____, AT PAGE _____

RECOVERY TIE DRAWING



MONUMENT DESCRIPTION AND REMARKS :

854/35w - 010904

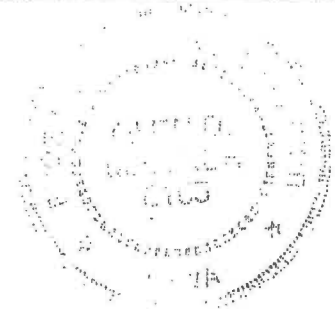
249 ✓

MONUMENT DESCRIPTION AND REMARKS :

FND. 5/8" Ø PIN W/YELLOW MMS CAP # 8165, FLUSH WITH THE GROUND, TIES FROM THE RECORDED TIE IN INSTRUMENT NUMBER 9899 1023, WERE DESTROYED, SO NEW TIES WERE SET.

I HEREBY CERTIFY THAT THE CORNER LOCATION(S) SHOWN ON THIS RECORD WERE DETERMINED BY ME OR UNDER MY DIRECT PERSONAL SUPERVISION AND THAT THIS U.S. PUBLIC LAND SURVEY MONUMENT RECORD IS CORRECT AND COMPLETE TO THE BEST OF MY KNOWLEDGE AND BELIEF.

Glen D. Meisner 1-9-04
 GLEN D. MEISNER, PE & PLS Iowa License No. 8165 DATE
 MY BIENNIAL RENEWAL DATE IS DECEMBER 31, 2005



DZMOML <input checked="" type="checkbox"/> GOVERNMENT CORNER <input checked="" type="checkbox"/> 5/8" TIE PIN SET --- CENTERLINE -x-x- EXISTING FENCE LINE - - - R.O.W. LINE	SHEET TITLE: U.S. PUBLIC LAND SURVEY CORNER CERTIFICATE	MMS CONSULTANTS, INC. Iowa City, Iowa 319-351-8282				
	PROJECT TITLE: CARROLL HUMPAL JONES COUNTY, IOWA					
DRAWN BY: RLS	CHECKED BY: RLS	APPROVED BY: GDM	DATE: 1-9-04	SCALE: NONE	FIELD BOOK: 704	PROJECT NO.: 4470-016

J

SECTION CORNER CERTIFICATE

OF
 LAND SURVEY MONUMENTS SITUATED IN SECTION 2, TOWNSHIP 84 NORTH,
 RANGE 4 WEST, OF THE FIFTH PRINCIPAL MERIDIAN, JONES, COUNTY, IOWA.

PREVIOUSLY RECORDED IN BOOK _____ AT PAGE _____

FOR RECORDER'S USE

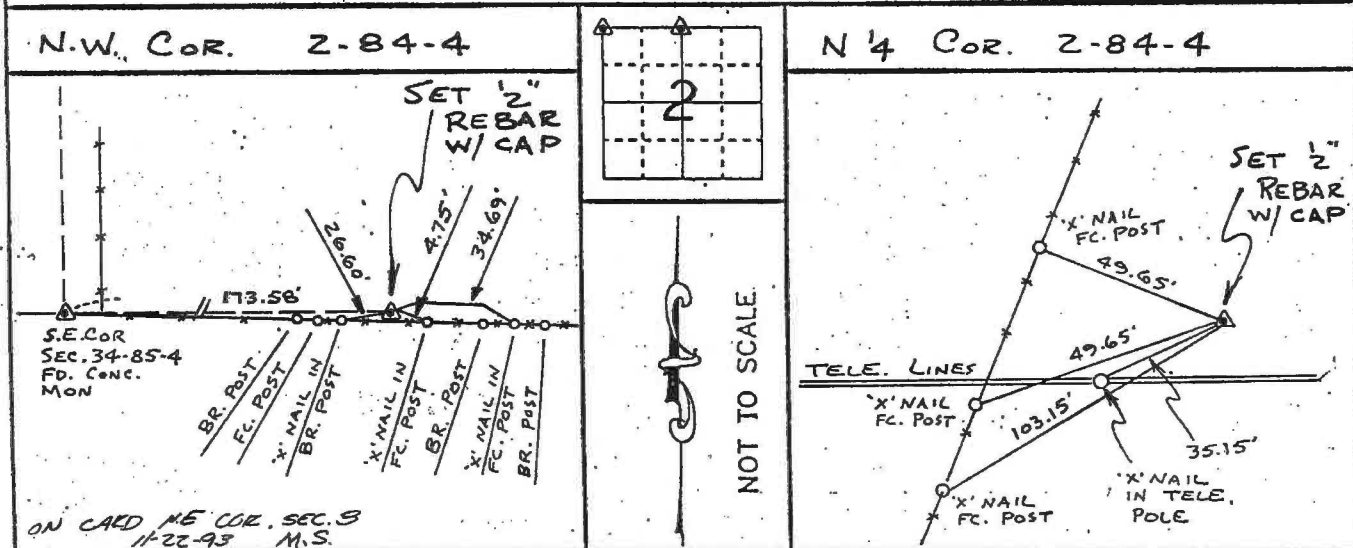
REASON FOR PREPARING CERTIFICATE:

- A) THERE IS NO CERTIFICATE FOR THE CORNER ON FILE WITH THE RECORDER OF THE COUNTY IN WHICH THE CORNER IS LOCATED.
- B) CORNER POSITION DIFFERS FROM THAT SHOWN IN THE PUBLIC RECORDS OF THE COUNTY IN WHICH THE CORNER IS LOCATED.
- C) THE CORNER MONUMENT HAS BEEN REPLACED OR MODIFIED.
- D) THE REFERENCE TIES REFERRED TO IN AN EXISTING PUBLIC RECORD ARE INCORRECT.

MONUMENT DESCRIPTION AND REMARKS :

N.W. CORNER SECTION 2-T84N-R4W SET 1/2" REBAR
 W/ U.S. CAP # 8165 FLUSH W/ GROUND 4 1/2" NORTH OF
 EAST-WEST FC.
 N/4 CORNER SECTION 2-T84N-R4W SET 1/2" REBAR
 W/ U.S. CAP # 8165 4" DEEP

RECOVERY TIE DRAWING



I, GLEN D. MEISNER, CERTIFY THAT THE CORNER LOCATION(S) SHOWN ON THIS RECORD WERE DETERMINED BY ME OR UNDER MY DIRECTION AND CONTROL AND THAT THIS U.S. PUBLIC LAND SURVEY MONUMENT RECORD IS CORRECT AND COMPLETE TO THE BEST OF MY KNOWLEDGE AND BELIEF.



Glen D. Meisner 6-29-93
 GLEN D. MEISNER L.S. NO 8165 DATE

<p>LEGEND</p> <ul style="list-style-type: none"> △ GOVERNMENT CORNER ○ 5/8" TIC PIN SET — CENTERLINE - - - EXISTING FENCE LINE - - - R.O.W. LINE 	<p>SHEET TITLE: U.S. PUBLIC LAND SURVEY RECORD</p> <p>PROJECT TITLE: MARK OGDEN SURVEY</p>	<p>HALL AND HALL ENGINEERS, INC. 226 29TH STREET DRIVE S.E. CEDAR RAPIDS, IOWA 52403 319-362-9548</p>
<p>D W N R W B X T C G D M A P</p>	<p>D DATE 3-14-93 SCALE NONE</p>	<p>P NO B 0T.23 P NO PROJ 4820</p>

84403e-062993 . 84402c-062993

98 SEP 21 PH 12: 01

MARIE KRUTZFIELD
 RECORDER 6-00 Pd

MMS CONSULTANTS INC., 1917 SO. GILBERT ST., IOWA CITY, IA, 52240, PH 319-351-8282

U.S. PUBLIC LAND SURVEY CORNER CERTIFICATE

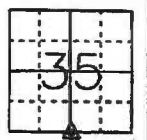
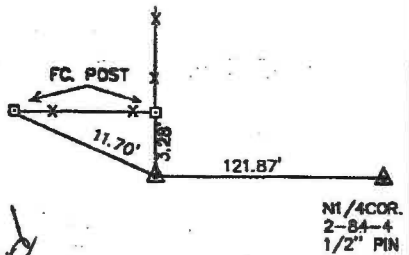
FOR LAND SURVEY MONUMENTS SITUATED IN SECTION 35, TOWNSHIP 85 NORTH,
 RANGE 4 WEST, OF THE FIFTH PRINCIPAL MERIDIAN, JONES, COUNTY, IOWA.

REASON FOR PREPARING CERTIFICATE:

- A) THERE IS NO CERTIFICATE FOR THE CORNER ON FILE WITH THE RECORDER.
 B) CORNER FOUND DIFFERS FROM PREVIOUSLY RECORDED CERTIFICATE RECORDED IN BOOK , AT PAGE .

RECOVERY TIE DRAWING

S1/4 COR. 35-85-4



on cod

MONUMENT DESCRIPTION AND REMARKS :
 SET 5/8" PIN ON LINE BETWEEN N1/4
 & NW COR. 2-84-4 AS PER
 GOVERNMENT NOTES.

MONUMENT DESCRIPTION AND REMARKS :

I HEREBY CERTIFY THAT THE CORNER LOCATION(S) SHOWN ON THIS RECORD WERE DETERMINED BY ME OR UNDER MY DIRECT PERSONAL SUPERVISION AND THAT THIS U.S. PUBLIC LAND SURVEY MONUMENT RECORD IS CORRECT AND COMPLETE TO THE BEST OF MY KNOWLEDGE AND BELIEF.



Glen D. Meisner 9-15-98
 GLEN D. MEISNER, PE & LS IA. REG. NO. 8165 DATE
 MY BIENNIAL RENEWAL DATE IS DECEMBER 31, 19 97

GOVERNMENT CORNER 5/8" PIN SET CENTERLINE EXISTING FENCE LINE R.O.W. LINE	SHEET NO. U.S. PUBLIC LAND SURVEY CORNER CERTIFICATE	MMS CONSULTANTS, INC. Iowa City, Iowa 319-351-8282
	PROJECT NO. CARROLL HUMPAL	
T.E.H.	G.D.M.	G.D.M.
DATE 4-2-98	SCALE NONE	F. NO. 468 JOB NO. 4470-003