

Instrument #: 2024-1168
 06/04/2024 09:00:21 AM Total Pages: 1
 ZSC SECTION CORNER CERTIFICATE
 Recording Fee: \$7.00 Transfer Tax: \$0
 Sheri L. Jones, Recorder, Jones County Iowa



-PREPARED BY AND RETURN TO: MMS CONSULTANTS, INC. 1917 S. GILBERT ST. IOWA CITY, IOWA 52240 (319)351-8282-

U.S. PUBLIC LAND SURVEY CORNER CERTIFICATE

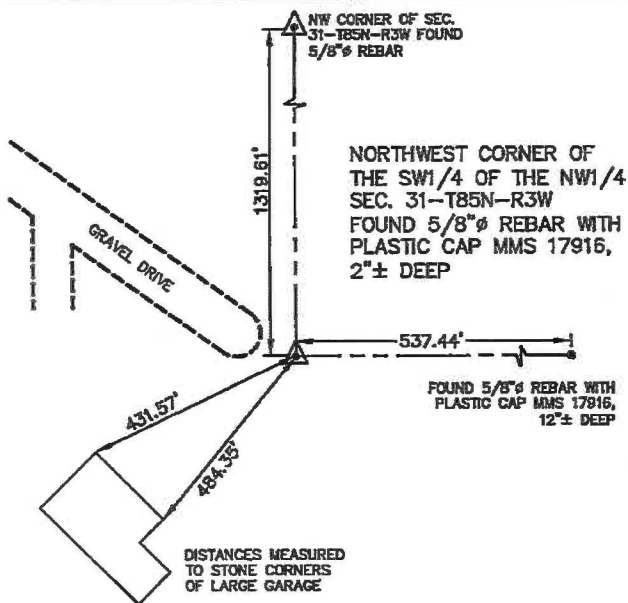
FOR LAND SURVEY MONUMENTS SITUATED IN SECTION 31, TOWNSHIP 85 NORTH, RANGE 3 WEST, OF THE FIFTH PRINCIPAL MERIDIAN, JONES COUNTY, IOWA

REASON FOR PREPARING CERTIFICATE:

- A) THERE IS NO CERTIFICATE FOR THE CORNER ON FILE WITH THE RECORDER OF THE COUNTY IN WHICH THE CORNER IS LOCATED.
- B) THE CORNER POSITION DIFFERS FROM THAT SHOWN IN THE PUBLIC RECORDS.
- C) THE CORNER MONUMENT WAS REPLACED OR MODIFIED.
- D) THE REFERENCE TIES REFERRED TO IN AN EXISTING PUBLIC RECORD WERE MISSING OR ARE NOT CORRECT.

RECOVERY TIE DRAWING

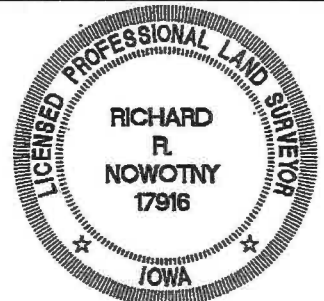
NORTHWEST CORNER SW1/4, NW1/4



MONUMENT DESCRIPTION AND REMARKS :

I hereby certify that this land surveying document was prepared and the related survey work was performed by me or under my direct personal supervision and that I am a duly licensed Professional Land Surveyor under the laws of the State of Iowa.

Richard R. Nowotny 5-20-2024
 RICHARD R. NOWOTNY
 P.L.S. Iowa Lic. No. 17916
 My license renewal date is December 31, 2025



Drawn by:	Scale:
LRS	NONE
Checked by:	Date:
RRN	05/17/2024
Field Book:	Project No:
1390	10305-009

U.S. PUBLIC LAND SURVEY CORNER CERTIFICATE
 SECTION 31-T85N-R3W OF THE 5TH P.M.
 JONES COUNTY, IOWA
 ELON HOMES INC. PROJECT

MMS CONSULTANTS, INC.
 IOWA CITY, IOWA 52240
 (319) 351-8282
 www.mmsconsultants.net



Date	Revision